

SAND & STONE

The official magazine of the CMPA

• REVIEW OF WORK PLANS

• CMPA ANNUAL REPORT

ISSUE 58

• MEETING MINISTER MULDER

• 2011 ANNUAL DINNER

Aug/Sept 2011

IN SEARCH OF BALANCED REGULATION

Wodonga Quarries



Brightwater
MANUFACTURING

Brightwater Manufacturing

Ph: +61 3 9311 8558

Fax: +61 3 9311 9558

For more information please visit our website
www.brightwater.net.au/manufacturing-scs

VICTORIA

Darin Compt : +61 434 690 626

Email: darin.compt@brightwater.net.au

QUEENSLAND

Paul Lipsham : +61 431 604 104

Email: paul.lipsham@brightwater.net.au

Increase Your Efficiency and Profitability

High Performance Aggregate Crushing and Screening Technologies

Brightwater Manufacturing offers a complete range of rugged and reliable SCS machines from Deck Screens, Reclaimers, VSI Impactors to fully customised Cone Crushers delivering proven quality and performance.

Each machine is designed to operate in closed or open circuit crushing, with matched screening machines. Brightwater's Service Division ensures you will have minimal downtime increasing the overall efficiency and profitability of your operation.

Contact us today for your professionally managed aggregate solution.



SCS-TC1885C Cone Crusher



SCS-205S 3 Deck Screen



SCS-165R Reclaimer



SCS-TC3070V VSI Impactor



Brightwater Manufacturing
is a member of the Brightwater
Group of Companies



Australian
Wide Service



SCS is a Brightwater
Manufacturing Product

CONSTRUCTION MATERIAL PROCESSORS ASSOCIATION

P O Box 396

Kilmore VIC 3764

Ph: 1300 267 222

Ph: 03 5781 0655

Fax: 03 5782 2021

Email: enquiries@cmpavic.asn.au

Web: www.cmpavic.asn.au

SECRETARIAT

Public Officer: Bruce McClure

Honorary CEO: Ron Kerr

General Manager: Bruce McClure

Development Manager:

Adrian Town, Tel. 0427 309 038

Administration Officer: Gavin Moreira

MANAGEMENT COMMITTEE

Chairperson: John Mawson

Associate Chairperson:

Mark Thompson, Tel. 03 8761 6911

Treasurer: Robin Hocking

Members:

Peter Baenziger

David Eldridge

Tim Bird

Basil Natoli

David Carrucan

Steven Richardson

Garry Cranny

ASSOCIATE COMMITTEE

Ass. Chairperson: Mark Thompson

Ass. Vice Chairperson: Tej Panesar

Other Members:

Erik Birzulis

Sharron O'Donoghue

Darin Compt

Chris Prowse

Wayne Hanson

Frank Santoro

Adrian Mason

Craig Staggard

Copyright

Sand & Stone is distributed to all Members and interested parties within the clay, gravel, hard rock, lime, masonry, recycling, sand and soil industries. No part of this publication may be reproduced or copied in any form without the written permission of the publisher.

For copyright waiver enquiries please call the Secretariat on 03 5781 0655, or e-mail at enquiries@cmpavic.asn.au

Disclaimer

The CMPA takes all care in the preparation of Sand & Stone, but accepts no responsibility or liability for the accuracy of the published information. Persons acting on any opinion, advice, fact or advertisement published in this issue does so entirely at their own risk.

The CMPA advises that where plant and equipment such as pressure equipment, tractors, earthmoving equipment, lasers, scaffolds, temporary access equipment, explosive powered tools, turbines, cranes, hoists, etc or any plant that processes materials by an energy source other than manual labour (excluding hand held electric, pneumatic or compressed air hand held tools) the requirements of the OHS Regulations 2007 and its updates and other guidance material apply.

CONTENTS

COMMENTS

From the CMPA Secretariat, **Pg 5**

Wodonga Quarries, **Pg 7**

FEATURES

Parliamentary Inquiry – CMPA Calls for Balanced Regulation, **Pg 10-11**

Work Health and Safety Management Systems, **Pg 12-13**

Working Towards a Better Future – Work Plan Review, **Pg 14-15**

Road Related Impacts on the Extractive Industries, **Pg 17**

CMPA Annual Dinner 2011, **Pg 18-21**

CMPA Annual Report, **Pg 22-25**

SAFETY

Regulation Update, **Pg 26**

You and Your Mates' Safety is Paramount, **Pg 27**

EDUCATION

Training Day for Certificate IV Students, **Pg 29**

BUSINESS

Energy Management – Simply Vital Going Forward, **Pg 33**

MEMBERSHIP

Oli Australia – Energy Efficient Vibrating Equipment, **Pg 34-35**

Astec Australia – Great Service Leads to Great Growth, **Pg 36**

REGULARS

CMPA News.....	8-9
VLPA Update.....	30
DPI Update.....	31
Training & Events.....	37
Associates Directory.....	39



The 349D L and 349D L Mass Excavation Excavators offer outstanding performance, excellent control, high stick & bucket forces, impressive lift capacity and a comfortable operator station to increase your productivity and lower your costs.

A wide variety of optional and factory-installed attachments are available to enhance performance and improve job site management.

To find out more about this impressive machine and how it can increase your quarry's productivity, contact your local William Adams branch today or visit www.williamadams.com.au

WORKING IN A QUARRY?



Head Office Victoria
William Adams Pty Ltd
17-55 Nantilla Road
Clayton North, Vic 3168
Ph (03) 9566 0666
Fax (03) 9561 6273
www.williamadams.com.au

Locations
Laverton • Swan Hill • Traralgon • Orbst •
Wodonga • Horsham • Mildura • Geelong •
Warrambool • Bendigo • Burnie • Hobart •
Launceston •

CAT, CATERPILLAR, their respective logos, "Caterpillar Yellow", the "Power Edge" trade dress as well as corporate and product identity used herein, are trademarks of Caterpillar and may not be used without permission. © 2011 Caterpillar. All Rights Reserved.

William Adams



DESIGN
MARKETING
PUBLIC RELATIONS

industri
COMMUNICATIONS

*P.R. & Communications: Community relations, product, business
Marketing: Advertising strategy, design and copywriting
Publishing: Magazines, newsletters, fliers, direct mail print management
Design etc: Websites, photography, DVD, radio & TV production*

Genuine industry experience & understanding

Contact: Tom McKenny 1 Perrett Street, Brunswick West, Vic, 3055
Ph: 0418 132 911 E: tom@industri.com.au

FOCUS
creative development solutions

- Town planners
- Environmental consultants
- Development consultants
- Project managers

Our practice is experienced in obtaining approvals for extractive industry, landfill and land development projects.

Contact: Jack Kraan Email: jkraan@focuscds.com.au
Phone: (03) 8794 9911 Fax: (03) 8794 9922

10% discount for CMPA members

Isn't it time you thought about automatic lubrication?

NATIONWIDE NETWORK

Toll Free: 1800 640 560

New Chairperson for the CMPA

Outgoing CMPA Chairperson, TIM BIRD reports on his three years as leader of the association.

THANK you to all Members and guests able to attend our Annual General Meeting and Dinner this year in Echuca Moama. We had great attendance with around 200 people coming along to enjoy the evening put on, once again, by our very generous sponsors. The weather was fantastic, giving all attendees the opportunity to take part in the many attractions this great region has to offer.

For those Members not in attendance, an important part of this year's AGM was to resolve the motion to appoint a new Chairperson to the Management Committee, as my three year term has come to an end.

I would like to congratulate John Mawson of E.B. Mawson & Sons Pty Ltd for accepting the position of Chairperson of the CMPA. John has been a Management Committee member for 3 years and has immense knowledge of our industry; like many of our Members, he is another generation of quarry men.

It has been a great honour for me to lead the CMPA for the past three years. The CMPA to me is the driving force behind our industry in Victoria, guiding our members through the many and varied issues thrown into our path in the day to day running of a small business. An industry like many, that is being more and more regulated by governments that are supposedly deregulating and cutting red tape for business.

Without the efforts made by our small but very dedicated Secretariat and the support of the Management Committee, I believe many of our members would be left floundering in

the uncertain waters of what lies ahead and how to navigate forward with issues from all directions:

- Where to train staff? How do I train staff? Is the training material adequate?
- Am I meeting my OH&S obligations?
- How do I comply with the changes being implemented by NATA and how do the Vic Roads specification changes affect me?
- Are the ever increasing bonds going to push me out of the industry?
- How will the cultural heritage and native vegetation legislation affect the extension to my work Authority?
- Is there a government body willing to take stewardship of the sand and stone resources and requirements of our future generations?

These are just a few of the many concerns that play on our minds as quarry and recycling operators in Victoria, all this on top of the daily pressures in running a successful business.

So it is with great appreciation I must say thank you to all those involved with the CMPA, for their support and amalgamation of industry concerns and their willingness to come together to find resolutions to these issues that face our industry.

We should be very proud of what we have achieved as an industry body in just 12 years, to be such a well respected and consulted organisation is testament to the hard and tireless work of a knowledgeable team of passionate people. ■



REVIEW OF ABORIGINAL HERITAGE ACT 2006

The Minister for Aboriginal Affairs Jeanette Powell has requested a review of the operation of the *Aboriginal Heritage Act 2006* (the Act). An external advisory group has been appointed by the Minister, to oversee the review process and to ensure the review is conducted in an open and transparent way.

A discussion paper has been prepared which gives details about the review process, the current Aboriginal Heritage Act and key themes and discussion points. A copy of the discussion paper can be obtained from the Aboriginal affairs website:

www.dpcd.vic.gov.au/indigenous

The primary focus of the review is the Act. However if issues raised relate to the *Aboriginal Heritage Regulations 2007* (the Regulations) these will also be considered.

The CMPA will be making a comprehensive submission to the Aboriginal affairs Victoria regarding the review based on feedback from Members.

The submission is due by the 25 November 2011.

Annual Dinner 2011, John Mawson the new Chairperson for the CMPA





www.wamaust.com.au

Specialists in Equipment for handling
Powders & Granular Materials

The WAM Group is a world leader in supplying custom built equipment used for handling Powders & Granular materials. Specialising in equipment produced using cutting edge technology, standard modular design and manufactured from materials of the highest quality together with our proven level engineering excellence, reliability and price to performance ratio makes WAM the choice for all your material handling needs. So what ever your industry, when you need material handling equipment on time on budget, give WAM Australia a call. Specialising in providing material handling solutions.

For your material handling and dust control needs call

WAM Australia Pty Ltd

Head Office

5 Easlepur Court Kilsyth Vic 3137

Tel: +61 3 9737 4700 Fax: +61 3 9761 4940

- ◆ Bag Breakers & Compactors
- ◆ Bulk Bag Unloaders
- ◆ Butterfly Pinch & Sidegate Valves
- ◆ Cone Bin Activators
- ◆ Dust Filters, Cartridges, & Bags
- ◆ Fluidisation parts and nozzles
- ◆ Bin & Silo Level Indicators
- ◆ Loading Bellows
- ◆ Micro Batch Feeders
- ◆ Silo over-filling protection systems
- ◆ Ploughshare and paddle mixers
- ◆ Rotary Valves, Droptrough & Blowthrough
- ◆ Screw Conveyors – Vertical Sludge
- ◆ Bucket Elevators
- ◆ Vibrators, Pneumatic & Electric
- ◆ Dust Conditioners
- ◆ Water Treatment Plants
- ◆ Concrete Reclaimers



CONTACT DETAILS & LOCATION

Level 1, 28 Riddell Parade
Elsternwick, Victoria, 3185

Ph: 61 3 9523 2277
Fax: 61 3 9523 2177

Email: john@meadpartners.com.au
Web: www.meadpartners.com.au

BUSINESS ADVISORY & TAXATION

In today's economic times the successful management of your business cannot be over-emphasised. Accurate reporting of your trading results is essential so that you can make well-informed decisions about the strategic direction of your business. We at Mead Partners are confident that we have the solutions to all your accounting needs.

Specialising In:

- Business Advisory • Taxation Advice • Other High Value Services



QUALITY PERFORMANCE LUBES

Manufactures a complete range of lubricants to help keep your operational fleet on the move. QPL offer service's to help with the correct application of lubricants for your vital equipment. QPL have the "GOOD OIL" to give your operational fleet the attention it deserves; keep your costs in check by using QPL.



PHONE: 03 5367 8794

Email: qplubes@bigpond.com Website: www.qplubes.com

**Electrical Specialists in Concrete Plants and Quarries
24 hr Breakdown Service**

- Design of automation systems
- HMI packages; i.e. computer touch screens
- Installation and programming of PLC's
- Preventative maintenance of plants and machinery
- Motor control centres and distribution boards
- Installation of mains supply cables
- Installation of small and large underground cabling
- Voice and data cabling for various applications
- CCTV Systems
- Electrical consulting
- Thermal Imaging
- Location of underground services

CEC Electrical Pty Ltd

Craig Cahill

0417379062

craig@cecelectrical.com

Wodonga Quarries

MAURICE ADRIEN, reports on the history and development of Wodonga Quarries.

WODONGA Quarries, situated 10km from the NSW/VIC border in West Wodonga was formed in 1987. Prior to 1987, a parcel of Crown land, which is now owned by the quarry, was originally quarried by the Wodonga Council for its works maintenance within the area.

The land surrounding this was owned by a local resident by the name of Bill Nicholson. Bill noticed the material coming out of this council quarry and saw its potential, thus applying for an EIL at the time. The EIL was granted but Bill didn't progress in setting up a plant. Several other locals commenced discussions with Bill in relation to the land and the market potential. In early 1987 these locals, Bridget & Michael Wolk, Evelyn & Bill Graham and Valerie & Reno Calagas formed the company, Wodonga Quarries Pty Ltd and purchased this land and EIL from Bill.

Design works started almost immediately and in September 1987 works started on the construction of the process plant. Unfortunately Bill Graham passed away in August 1987 not being able to see the start of construction. Finally in April 1988, the plant was commissioned and the first load of material was sold.

Over the year's ownership changed with other parties buying into and departing from the business (Lawrence and Margaret Hannebery, HC Judd Holdings and Bruttund Investments).

In 1995, an opportunity arose with one of the partners in the business wanting to leave. The late David Barro saw further potential in the business & the region. Barro Group

bought into the business, and then in 2008 the group acquired the company adding to its growing family business.

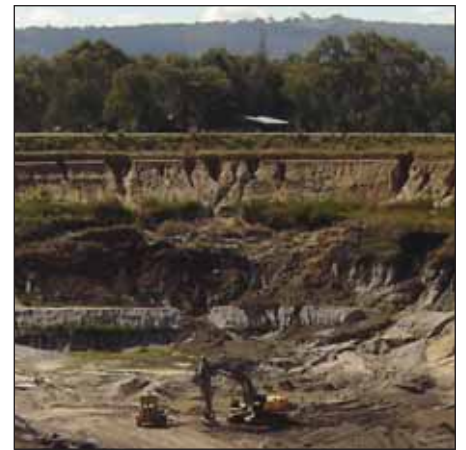
At that time the plant was medium sized and basic in design but well suited to market requirements, the mobile plant consisted of second hand equipment and contractor equipment to get up and running. As the business grew, this mobile equipment was slowly replaced with new equipment. The plant also had equipment additions in the quest for process improvement and better efficiency.

In 2006, a pug mill/blending and stabilisation plant was installed, thus further improving road base production and opening the quarry up to a wider market and also turning some by-products or "slow moving products" into a marketable product.

During the years, the company saw good and bad times, with growth in the area and Mother Nature having her say. In 1992 there were major floods in the area, which almost saw the quarry being inundated. With the hard work of staff, customers and friends of the business, the flood waters were held at bay until they receded. Further floods occurred in 1993, 1996, 2000 and 2010, but with the experience of the 1992 flood, the quarry was prepared for these.

Today, Wodonga Quarries services the local Albury Wodonga region and areas up to 150km away, with a client base of concreters and construction companies, contractors, garden supply businesses and the general public. ■

Pictured on the cover is Wodonga Quarries.



60 SECONDS WITH A VOTING MEMBER...

What is your name?

Maurice Adrien

Who do you work for?

Wodonga Quarries Pty Ltd (Barro Group)

How many years have you worked for this business?

8.5 years

How many years have you been involved in the Industry?

23 years

What is your role at the company?

Manager

What does your job involve?

I oversee the development & running of the quarry; sales and marketing of Wodonga Quarries.

What is the best part of your job?

Working with the staff. Their team based work attitude helps for an easier & pleasant work place to manage.



CMPA NEWS

By **CMPA SECRETARIAT**

CMPA Secretariat provides an update of the latest news and happenings.

RECENT EVENTS

Bruce McClure met with John Mitas and other DPI staff to look at setting up a working group to discuss Work Plan improvements.

Bruce McClure and Garry Cranny met with Jane Sims from Box Hill TAFE to discuss current and future training opportunities.

CMPA met with Graeme Newman (VicRoads) and Stacey Clark (BRIT) to discuss the proposed "Collect routine site samples" course.

Bruce McClure and Garry Cranny attended the CCAA & IQA Extractives Dinner.

CMPA attended an EPA and DSE Statutory Policy Review workshop

Bruce McClure and Anthony Webster (photographer) visited several quarries in the north of Victoria to visit sites and to obtain on site photos.

CMPA met with WorkSafe Victoria regarding the national uniform work health and safety laws, specifically the *Work health and safety management systems – mining regulations and code of practice*.

CMPA attended second Work Plan Working Group Meeting at DPI.

CMPA attended a meeting with DPI regarding the *Native Vegetation Framework*.

CMPA attended a meeting with DSE regarding a review of the *Aboriginal Heritage Act*.

MAJOR CONCERNS IN EXTRACTIVE INDUSTRIES

Bruce McClure CMPA and Peter McCluskey from the VLPA met in late July with two Officers from the Office of Energy and Earth Resources Strategic Policy (OEERSP) of DPI. The point of the meeting was for the DPI staff to get an idea of the major problems causing concerns in the extractives industry. They were working on a paper that would be going to the Minister on concerns from the Industry not just to do with regulations but on what the industry perceived as major hurdles facing the industry in the future (e.g. stone resource, costs, etc).

The general comment was made that many of the problems that our members expressed concerns about over 10 years ago when the CMPA was formed have not been addressed but are still with us. Despite numerous inquiries, workshops and discussion papers, very little has actually changed. Governments of all persuasions acknowledge that there is too much red tape and too much regulation yet nothing has really occurred that has reduced the requirements in these areas. There seems to be more and more impost on family businesses at a time when cost pressures are making entry into our industry very difficult.

Specific topics discussed included:

- The negative impact that native vegetation, cultural heritage management plans and community consultation are having on our members, particularly when they are trying to establish new or extend existing quarries is of major concern.
- The urgent need for the streamlining of the planning approvals process for both state and local government.
- Future stone stewardship. The extension of the Urban Growth Areas in Melbourne that has occurred without establishing or identifying the stone resources that will be required in the future.
- Improvements required with the VCAT process.

VICTORIAN PLANNING PROVISIONS

The state Minister of Planning, Matthew Guy has established an Advisory Committee to provide advice to the government on ways of improving the planning system in Victoria.

The Advisory Committee since its establishment has called for submissions from organisations wishing to comment about the Victorian Planning Provisions, planning schemes and the planning system generally.

The CMPA late in August 2011 sent into this committee a submission highlighting what members consider to be the main concerns about the planning system in Victoria. Not only has the CMPA highlighted problems but have suggested realistic solutions to these as well.

The points shown below are the most contentious issues for members:

- Lack of state stewardship of extractive resources
- Excessive financial burden resulting from the current native vegetation and cultural heritage management plans
- Need for streamlining of the planning approval process
- Improvements required to the VCAT process
- Buffers

The work of this Advisory Committee is vital for the future planning regime that will exist in Victoria and the CMPA will be closely watching what develops.

ANNUAL DINNER PHOTOS

Would you like a happy snap of you and your friends all dressed up for the Annual Dinner? Photos from the night are available to be downloaded free of charge from <http://actionpix.com.au/CMPA2012/>. High resolution, printable versions of the photos can also be emailed to you. Please contact the Secretariat with the photo reference number from the website to arrange this.

NEW OHS LAWS – VECCI BRIEFINGS

Businesses must be ready to meet new obligations and responsibilities from 1 January 2012 when Australia-wide harmonised *Work Health and Safety Legislation* commences, replacing existing OHS acts.

There is much to do before the new year arrives. To help Victorian businesses adapt to the upcoming OHS changes, VECCI and CCILawyers will be providing a series of briefings aimed at clearly explaining the new laws, including:

- An outline of duty of care and due diligence obligations
- The VECCI ten-point plan for transition to the new legislation
- Information on the consultation, cooperation and coordination requirements of a 'person conducting a business'
- An overview of the new *Work Health and Safety Legislation*

VECCI briefings are a cost-effective way to help ensure your business is prepared, proactive and fighting fit.

- Dandenong on 3rd Oct.
- Geelong on 5th Oct.
- Warrnambool on 6th Oct.
- Ballarat on 10th Oct.
- Bendigo on 11th Oct.
- Wangaratta and Traralgon – 12th Oct.
- Mildura – 20th Oct.
- Nunawading – 21st Oct.
- Melbourne – 28th Oct.

VECCI members \$50, non-members \$75.

For more information or to register for your local briefing call (03) 8662 5333 or visit www.vecci.org.au

ASSOCIATE COMMITTEE

We have a new look Associate Committee for 2011/12, with Mark Thompson (Oli Vibrators) re-elected as the Associate Chairperson and Tej Panesar (TSP Group of Companies) elected as Associate Vice Chairperson.

There are also a few new faces added for the coming twelve months:

- Erik Birzulis (Landair Surveys),
- Darin Compt (Brightwater Manufacturing),
- Wayne Hanson (WAM Australia),
- Adrian Mason (ei engineering),
- Sharron O'Donoghue (Landmark Contracting),
- Chris Prowse (CK Prowse & Associates),
- Frank Santoro (Orica), and
- Craig Staggard (Terex Jaques).

THANK YOU TO YARRABEE

My name is Mark Guerra and I would like to publically acknowledge my thanks to Steve Adams and Chris Maskiell from Castlemaine Slate and Stone.

We purchased a home a year ago. The home is six years old, with approximately 50m² of outdoor paving. Soon after moving in we noticed that some pavers were loose – either rocking underfoot when walked on or spurting out water from the paver perimeter after some rain. Unfortunately this became more annoying by the day; hence we recently decided to do something about it.

I engaged an independent "expert" opinion who provided me a report to the state of the paving – the conclusion was not good. As the conclusion had implications for both the paver layer (Chris) and the paver supplier (Steve), I sought their attendance at a site meeting to discuss the independent findings.

Both men were expectedly guarded about the report content but genuine enough to attend. At the meeting we pulled up one paver together and quickly ascertained the root of my paving problem (which was different to the report conclusion) – effectively relieving both men of any responsibility.

Steve has been exceptionally helpful beyond this site meeting in assisting me with solving my problem. The points I wish to make are as follows:

- It was terrific to deal (in a time of angst) with genuine people
- It was terrific to deal with two men who stand by their product and service, and are amenable to discuss criticism of the same
- It was terrific to see how Steve supported his "subcontractors"
- It was terrific how Steve has extended help to me beyond the site meeting (at no cost to me)

My sincere appreciation to both men.

Yours faithfully, Mark Guerra.

CMPA MEMBERSHIP

Our sincere thanks to all Members who have renewed their membership for the 2011/12 financial year – without your support the CMPA could not continue its valuable work.

It would be appreciated if all outstanding renewals could be completed by the end of October.

FUTURE WORKSHOPS TO IMPROVE YOUR BUSINESS?

Since its inception the CMPA has kept members abreast of changes in government regulations and also changes taking place within the extractives industry.

Through our Associates, members have also been able to regularly see what new equipment and business techniques are available to the industry. To keep members up to date with information that is vital for their business the CMPA has regularly run workshops that are designed to provide good up to date practical information that will aid their business.

The slope stability workshops conducted earlier in the year were an example of this.

To ensure the CMPA is providing information that members need, we intend to shortly send out a brief questionnaire which will simply be seeking suggestions on what areas or parts of your business that you would like the CMPA to provide information on over the next twelve months.

It is important the Secretariat is aware of what your needs are so that relevant and up to date information can be provided.



PARLIAMENTARY INQUIRY – CMPA calls for Balanced Regulation

The CMPA contracted PETER DAY of Peter Day Consulting Pty Ltd to report on the inquiry into greenfields mineral exploration and project development in Victoria. Below is an extract of this CMPA submission.

IN February 2011, the Economic Development and Infrastructure Committee (EDIC) of the Parliament of Victoria was requested to inquire into greenfields mineral exploration and project development in Victoria.

Under the inquiry's terms of reference, the Committee is required to inquire and report to Parliament on the benefits and drivers of and barriers to greenfields mineral exploration and project development in Victoria. In particular, the Committee is required to examine:

- Victoria's mineral endowment (often referred to as 'prospectivity') across a portfolio of commodities (including energy earth resources and extractives products);
- The regulatory environment;
- Fees, charges and royalties;
- National and international perceptions of Victoria's prospectivity and regulatory environment;
- The success and failure of projects in Victoria's mining development pipeline;
- Different approaches and programs applied in other Australian and international jurisdictions to foster increased investment in greenfields exploration for, and development of, minerals and energy earth resources;
- The different roles of government (this may include, but is not limited to, targeted industry engagement, facilitation and generation of geological survey information);
- Opportunities to increase the net benefits from Victoria's minerals and energy earth resources, and to potentially provide for self sufficiency in low cost energy and extractive materials, consistent with the principle of economic efficiency; and
- Consideration of the costs and benefits of greenfields mineral exploration (economic, social and environmental), and whether there are opportunities to improve the management of potential conflicts between exploration and other land uses.

In late June 2011 the EDIC invited the CMPA to make a submission to the inquiry and a comprehensive submission was subsequently submitted late in August 2011.

The executive summary in its entirety from the submission is shown below. The summary is very relevant in that it clearly and articulately spells out the position of the members of the CMPA and what they have been saying about the problems with the extractive industry for a number of years.

EXECUTIVE SUMMARY

"The early 21st century has seen a significant worldwide shortfall in available replacement earth resources. This is a consequence of a failure by public and private capital to undertake meaningful greenfields mineral exploration. While this shortfall may not have reached critical proportions, should demand remain firm at prevailing levels, the fundamentals of supply and demand will continue to change towards diminished supply, which will inevitably go into significant deficit in the medium to long term.

Global insecurity and economic instability threaten to exacerbate this problem, as otherwise attractive exploration terranes are excluded for non-geological reasons. The risk-averse strategy of eking out mineralisation from brownfield sites is unsustainable. It is crucial therefore that greenfield sites are opened for development to meet these rising demands. But how open are they in Victoria?

The houses and gardens owned by Victorians are built from, and utilise material produced by, the extractive industry in the State. The extractive industry has grown to meet the demands of population growth and associated development. *The value of extractive production delivered to construction now exceeds the value of coal delivered into power production in Victoria.* However, spiralling regulatory demands involving the insidious sterilisation of land from extractive and other productive operations together with attendant costs are destroying the industry as we know it. The costs

Insurance for all your needs

Experts in insurance, risk management and financial services. OAMPS can provide you with all forms of insurance protection and offer a direct contact to the 28 OAMPS branches Australia wide.

For further information please contact Robert Villano on:

T: (03) 9412 1361
F: (03) 9412 1660
E: robert.villano@oamps.com.au

OAMPS

OAMPS INSURANCE BROKERS LTD
ABN 34 005 543 930 & FSL 238382 Ref: 04240363V1

Bell, Cochrane & Associates
Extractive Industries

PROFESSIONAL SERVICES TO THE QUARRYING & SAND EXTRACTION INDUSTRIES SINCE 1969

- 👤 Locating & Evaluating Extractive Resources
- 👤 Source Material & Product Evaluation
- 👤 Quarry & Pit Development Planning
- 👤 Practical Work Plans for DPI & other Approvals
- 👤 All forms of Mapping and Graphical Presentations

* FULL IN HOUSE EXPERIENCED & PROFESSIONAL GEOLOGICAL, RESOURCE ENGINEERING, ENVIRONMENTAL & CARTOGRAPHIC TEAM *

Tel: (03) 9710 1800 email: admin@bellcochrane.com.au

of the houses and gardens of Victorians will increase substantially as required extractive material will have to be imported from farther afield, nearby States or even overseas. Unquestionably, these impacts will involve significant employment losses with their associated economic and social costs.

The Committee's Inquiry provides the opportunity to highlight to the Parliament the very simple point that without energetic people who are prepared to risk their own capital in wealth creating markets in the search for earth resources from greenfield sites, development will stall and supply will dry up. This submission presents the case that restrictive regulation dissuades investors and unreasonable regulators slam the door on development. Important as they might be, regulators do not add to the value of productive goods and services. They do not risk their capital nor meet increasing demands for earth resources. The demonstration of ever increasing regulatory burden attests to their lack of understanding of this basic fact. The CMPA acknowledges the recent efforts by the DPI in recognising the dilapidated state of the regulatory apparatus under its administration. It is only reasonable to expect that the outcome of their efforts will be more efficient and balanced regulation.

The plea by the Association is for balanced regulation. Balance in the quest of increasing social and environmental needs with the need of industry to be able to confidently risk its capital and ingenuity in the pursuit of profit-making ventures in a fiercely competitive environment. Balanced regulation will provide benefits for consumers of earth resource products. They will have more choices of product, more choices in terms of access to product and more choices in the optimum mix of prices of products reflecting vibrant competition and a low cost regulatory environment. Balanced regulation will also allow small business enterprises including family businesses to flourish within their own operating market segments without the costs of unnecessarily complex regulation that makes their businesses vulnerable to anti-competitive pricing and ultimate poaching by multi-national operators.

The Inquiry's Terms of Reference are very broad. The CMPA believes there are no new solutions. It has all been said before.

The Government has regulatory gate-keeping arrangements in place although they must be improved. *Regulatory balance is the key and is the answer.* This is not complex science but demands grit and determination in the face of newly created regulatory demands from eminent, articulate and often convincing people, generally funded from the public's purse. It is too easy for legislators to go with the populist tide of emotive and plausible arguments presented by these good-willed people. Legislators must resist these challenges in the knowledge that balanced regulation including low cost access to greenfield development sites will provide long term sustainability for all the State's communities.

This submission responds to the Inquiry's Terms of Reference by referencing data provided in the Association's earlier comprehensive report, *An Unsustainable Future - The Prohibitive Costs of Securing Access to Construction Material Resources in Victoria*. Through the use of detailed case studies that report set out the prohibitive costs of entry to the industry and the overall regulatory environment in which the industry struggles to operate. *Most alarming of these regulatory controls is the choking off of extractive industry development in Victoria through the sterilisation of available land.*

In addition to a detailed response to the regulatory environment this submission gives an update on the nine case studies used in the *An Unsustainable Future* report and provides an analysis of the impact of the spiralling levels of rehabilitation bonds on the industry. Rehabilitation bonds are relevant to the fees, charges and royalties element of the Terms of Reference.



Site Photo – Goulburn Valley Resources

The recent increased levels of bonds have been the cause of collapse of some extractive operations already and the cessation of several major new extractive developments – all of which have economic and regional impacts. These impacts, as terrible as they are in themselves, are even more devastating when they are the result of a bond system that is unwarranted and should be completely overhauled anyway.

Finally, the submission considers the success and failure of projects in the sector. Examples are provided where due to the unreasonable and inflexible demands of regulators proposed multi-million dollar extractive operations are halted along with the prospect of associated increased employment and economic activity in the local areas. These failed projects truly highlight the anti-development nature of many regulators who have no understanding of how their actions serve their State so poorly.

The submission presents a range of solutions to the problems that beset the industry that if adopted, would provide opportunities to increase the benefits from the State's earth resource sector. Primarily these opportunities lie in streamlining and simplifying native vegetation and cultural heritage legislation so that greater access to land for extractive operations can be provided. Also, there is an urgent need to reduce the costs and delays endemic in the administration of Mineral Resources (Sustainable Development) Act 2101. *Above all, there is a fundamental need for a more strategic approach to be taken to the planning and development system so that the demands of increasing population on earth resources can be met efficiently and effectively from within the State.*

Based on the submissions and public hearings the Committee will propose a range of recommendations to the Victorian Government (Based on the evidence it receives), to which the government must respond within six months from the date that the report is tabled. Realistically it will be towards the end of 2012 before members become aware of the Government response to the inquiry. The CMPA has and will continue to play a role in this inquiry. ■

WORK HEALTH AND SAFETY MANAGEMENT SYSTEMS

The CMPA reports on the proposed introduction of Work Health and Safety Management Systems to Extractive Industry Sites.

IN the last edition of *Sand and Stone* (June/July), the proposed draft *Harmonised Mining Regulations* and draft *Code of Practice* for the Work Health and Safety Management Systems (WHSMS) in Mining document was discussed. Following on from that article, Bruce McClure recently attended a meeting with WorkSafe Victoria where these proposed changes and their introduction was discussed. The Civil Contractors Federation (CCF) and the Cement Concrete & Aggregates Australia (CCAA) were also present at this meeting.

It was made quite clear that the CMPA and CCF have a real concern with the regulations and code of practice concentrating almost exclusively on mining activities. Apart from a brief reference to the extractives industry under Section 9.1.2 of the draft regulations which relates to extracting minerals from the ground and Section 9.1.3. which defines rock, stone, gravel or sand as a mineral, there is virtually no other mention of the extractives industry. The majority of text in the current regulations and code of practice does not relate to the extractives industry. There is also a real concern that the extractives industry and the construction industry may inadvertently be tied up with regulations that are meant for the mining sector but can affect the extractives and construction areas.

The CMPA position on these proposed regulations is quite clear. It does not believe that they should be imposed on

the extractive industries. The real concern is that there is no evidence to suggest that the extractive industry in Victoria has safety issues or the potential for major safety issues in the future to justify imposing such a burden on the industry particularly on small family businesses that employ very small numbers of people.

Governments frequently talk about reducing the red tape but this is just another example of additional costs and layers of bureaucracy being imposed on small family businesses without any discernable benefits.

WorkSafe Victoria (WSV) is in a real dilemma when it comes to these draft regulations. Although they may be sympathetic to the industry concerns with the way the regulations and codes are written, their hands are tied to the extent that the harmonisation of the regulations across Australia has been agreed to by all state and Federal governments.

The draft Regulations and Code of Practice mining are now out for public comment and the CMPA will be making a submission to Safe Work Australia with regards to the way the extractive industries have been all but ignored and on the proposed legislation and applicable code of practice.

The CMPA submission (prepared by Peter Day) to Safe Work Australia will address some of the concerns stated below.

Impact and credibility

The draft regulations Chapter 9 – Mines loses its impact and credibility to our members as it talks explicitly about mining for the overwhelming majority of the text even though in Victoria the extractive industry is bigger than mining (excluding coal). The only mention and reference to the extractive industries is under section 9.1.2 which relates to extracting minerals from the ground and Section 9.1.3. which defines rock, stone, gravel or sand as a mineral. The majority of text does not relate to the extractive industries or their systems of operations. The model put forward in these regulations is not representative of the risks, nature and activities that take place in a quarry. For that reason and assuming that the regulations become law, the CMPA considers that in that instance there should be specific regulations that relate to the extractive industries and that these should be contained in a specific document that refers to the extractive industries.

Confusion over regulations administered by different Government Departments

The draft regulations include requirements on road, vehicle operating areas, ground and/or slope stability. The CMPA has a concern that many of these areas are the responsibility of the Department of Primary Industries (DPI) in Victoria who issue and control the Work Authority for the extractive industries on the relevant sites. To have



Phone: 03 8551 9300 www.terexjaques.com Fax: 03 8551 9364

				
Sales	Service	Spare Parts	Engineering	Reliability

Designed and Serviced locally with 24 hour support

- Melbourne
- Perth
- Sydney
- Brisbane

two government organisations concerned about the same issues, that is, WorkSafe Victoria and DPI, will lead to confusion and frustration amongst our members. An even bigger concern is that many of these issues that only relate to mining will be imposed on the extractive industries because of incorrect interpretation of the regulations.

Managing recycling and mobile operators

It is estimated that currently in Victoria recycling and mobile plant operations contribute an additional 15% of the total extractive industries production in the state. These operations have not even been identified within the documentation and consequently, if they are exempt from the need to have WHSMS then there will not be a “level playing field” in Victoria.

Implementation compliance costs

Apart from the costs and time required in initially setting up the WHSMS, the compliance requirements (time, resources and cost) to maintain the system and report to the appropriate authority on the frequency set, will be considerable. This is simply another cost imposed on family owned business without any discernable benefits.



Site Photo – Allstone Quarries

The plea by the CMPA for considerable time is for balanced regulation. Balance in the quest of increasing social and environmental needs with the need of industry to be able to confidently risk its capital and ingenuity in the pursuit of profit-making ventures in a fiercely competitive environment. Balanced regulation will provide benefits for consumers of earth resource products. They will have more choices of product, more choices in terms of access to product and more choices in the optimum mix of prices of products reflecting vibrant competition and a low cost

regulatory environment. Balanced regulation will also allow small business enterprises including family businesses to flourish within their own operating market segments without the costs of unnecessarily complex regulation that makes their businesses vulnerable to anti-competitive pricing and ultimate poaching by multi-national operators. Regulatory balance is the key and is the answer. What is proposed to be imposed on the extractive industries in Victoria cannot be described as balanced regulation. ■



FINLAY
SCREENING & CRUSHING



- SALES - HIRE - SERVICE -

 **TEREX|FINLAY**

EXCLUSIVE AUTHORISED DEALER SINCE 1979

VIC SA & TAS AREA SALES MANAGER: HAN ALAM 0419 673 538
18 RANDOR ST, CAMPBELLFIELD, VIC 3061

Toll Free: 1800 777 300 www.finlay.com.au

Working Towards A Better Future – WORK PLAN REVIEW

BRUCE MCCLURE, CMPA General Manager reports on issues of current Work Plan arrangements.

THE CMPA members have expressed over many years their frustrations with the current Work Plan arrangements. The costs to comply with current regulations and the enormous costs involved in applications and variations are having major impacts on our industry. There is clear evidence that the industry is not taking up the challenge alone and this is reflected in the shortage of new Work Authorities over the last ten years, and supply shortages throughout Victoria.

The Department of Primary Industries (DPI) has set up a small working group comprising CMPA, Cement Concrete & Aggregates Association (CCAA) and DPI members to examine the issue of work plans.

The working group has been convened as a joint DPI/Industry project to further improve and simplify the work plans required for extractive industry applications. The group will focus on short and long term improvements that may require administrative or legislative improvements. It was recognised that to implement any legislative changes would need close cooperation with the legislation and Reform section of the Earth Resources Development Branch through the MRSDA review process.

The CMPA considers the Work Authority approvals process must be simplified and more targeted. This can be achieved without eroding regulatory objectives. The following recommendations for change have been part of the CMPA “must change” list for many years. The proposed changes are as follows.

REFINE THE WORK AUTHORITY/WORK PLAN APPROVAL PROCESS

The process should be refined and include the following component parts:

- A Code of Practice that is applicable to all quarries (A Code of Practice has been issued for small quarries);
- Simplified or no Work Plans;

- A Work Authority containing generic conditions, simplified rehabilitation bond system reflective of the risks, a code of practice and work plan provided to council with planning permit application;
- Planning Permit applications automatically submitted to council when the DPI holds its required consultative meeting (i.e. when it assigns a Work Authority number);
- Planning Permit conditions refer to only offsite impacts, that is, outside of the Work Authority boundary.

CENTRALLY MANAGE THE PROCESS

The Work Authority/Work Plan approval process should be centrally managed by the DPI. There is an MOU between DPI and Department of Planning and Community Development, but it is not recognised in legislation and is not supported by publicly available guidelines as to the services provided and in what circumstances.

This is in contrast with some other states where the role of the lead agency is more clearly identified and defined. For example, Western Australia has a Lead Agency Framework which sets out the lead agencies for various industry sectors and the level of services those agencies will provide for different classes of project.

The DPI should be empowered to manage planning referral obligations to referral agencies to achieve an endorsed Work Plan, eliminating duplication of referrals. Council approval processes should focus on offsite impacts with these aspects subsequently incorporated into the Work Plan.

LOWER THE COSTS OF REGULATORY ADMINISTRATION

The administration of the MR(SD) Act should aim at achieving performance-based outcomes that lower the costs and reduce the time or approvals for proponents.



Your specialist for: • Hard Rock Quarries • Sand Processing • Materials Handling
• Design, Build, Manufacture, Install and Commission

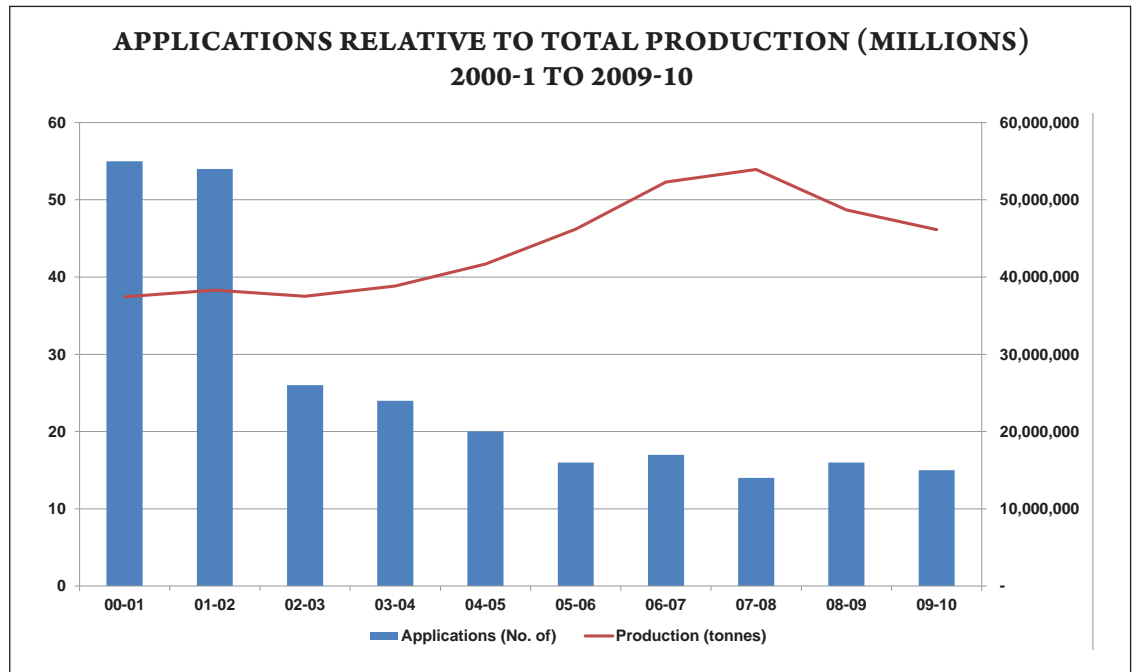
Brightwater
ENGINEERING

www.brightwater.net.au
Ph: 03 9546 2008 VIC
Email: inquiries@brightwater.net.au

INNOVATIVE SOLUTIONS TO INDUSTRY

REPORT DESIGN APPROVE BUILD COMMISSION

The figure above demonstrates that at a time of increasing demand when new extractive operations would be expected to be developed, applications for a Work Authority had in fact dramatically declined and very few significant operations were in fact approved.



IMPROVE THE VCAT SYSTEM

The VCAT system should be streamlined and modernised. For example, objectors in the VCAT process should provide substantiation of their claims and VCAT's decisions should be based on relevant public information. VCAT should provide a low cost mechanism for all parties and should take account of all the material already provided by proponents and relevant pre-existing studies rather than requiring

consultants to present at the hearing. An appeal mechanism for proponents should be introduced in the EES process.

The Association recognises the work currently being undertaken by DPI in considering how the Work Authority process can be improved. The setting up of this Work Plan group is very important and should result in a win-win situation for all stakeholders. Only time will tell if this is the case. ■



Our rental fleet includes the latest model equipment from the worlds leading manufacturers.



Hydraulic Excavators
Hitachi & Komatsu
30 to 90 tonnes



Compactors
Caterpillar 815F's & 825H's



Wheel Loaders
Komatsu WA500 &
WA600's, IT28G, IT62H's
WA320PZ-6



Articulated Dump Trucks
Hitachi & Volvo 30, 40 & 50
Ton capacity

Dozers
Cat D6R's, D7R's, D9Ts D10T's
Komatsu D375A-5



"The right gear in the right place at the right time."

Delta Rent Pty. Ltd
577 Plummer Street Port Melbourne Vic 3207
Fax: 9644 8765
Email: deltarent@deltagroup.com.au
www.deltagroup.com.au

Please call for more information
1300 793 071

Australian Agents for



Medium mobile
crushers & screens

PRECISION SCREEN

www.precisionscreen.com.au
info@precisionscreen.com.au

BRISBANE: 39 Quindus Street WACOL, QLD 4076 Office: 07 3271 4155 Fax: 07 3271 4800

SYDNEY: 12 Tait Street SMITHFIELD, NSW 2164 Office: 02 9609 2922 Fax: 02 9609 2933

**AUSTRALIA'S MOST COMPREHENSIVE RANGE OF
MOBILE SCREENERS,
SCALPERS,
CONE/JAW
& IMPACT
CRUSHERS**

**FREE CALL
1800 727 991**

TRACKMASTA 2153



Contractor 604



Precoater 6500



Scorpion Pugmill



TRACKCRUSH VSI

S. E QLD
Aidan
0427 727 994

NTH/CENT. QLD
Lou
0428 458 344

NT & WA
Ray
0438 930 216

SA, VIC & TAS
Mark
0402 026 520

WA
Tim
0488 772 799

NSW
Damian
0402 026 510

PNG
Paul
0407 727 995

AFTER MARKET
SALES MANAGER
Jonny
0427 727 992

SPARE PARTS
Shaun 0431 772 785
Jimmy 0438 115 227
Sam 0401 646 454

SPARES & SERVICE



- Screens
- Belt scrapers
- Crusher wear parts
- Service kits etc.



ROAD RELATED IMPACTS ON THE EXTRACTIVE INDUSTRIES



Minister Terry Mulder

TIM Bird Chairman of the CMPA, Garry Cranny Management Committee member and Bruce McClure General Manager of the CMPA met recently with the Hon Terry Mulder Minister for Public Transport, Minister for Roads to discuss a number of concerns of CMPA members that fall within the Minister's portfolios.

The Minister was very receptive to the CMPA comments and he did indicate that he would consider these further. The following are details on the issues discussed:

Registration of primary producer vehicles

The issue of the disparity between the registration of farm trucks and quarry trucks when both are used to cart quarry product as a commercial activity.

A number of primary producer registered trucks have been carting material for contractors, shires, etc. but have the major advantage of cheaper registration. Advice is

BRUCE MCCLURE, CMPA General Manager reports on the discussions had with the Minister for Public Transport and Roads.

that the trucks are considered unregistered and therefore uninsured when carting products on a commercial basis.

Development of a publically available database of vehicle's legal tare weight

The CMPA has suggested that there should be a publically available data base of vehicle registration and their tare weights. This would aid Weighbridge operators who rely on the truck drivers with respect to information on legal loads for their trucks. Safety and legal release loads is the issue. *The Chain of Responsibility* legislation may have some impact on this issue.

Better forward planning by VicRoads

The CMPA maintains that there is an urgent need for forward planning by VicRoads (particularly with their sprayed seals and asphalt works), to allow for quarry sites to have sufficient stone on the ground for works. There is insufficient forewarning of the quantity of stone required on the ground around Victoria. It has been suggested that VicRoads needs a five year programme of works which is updated regularly.

The approaching shortage of extractive products in Victoria

VicRoads needs to be looking at and managing extractive resources, planning well in advance. There will be a general shortage of products generally across Victoria. Some areas are already experiencing problems in sourcing stone and sand, for example,

Mildura and the Latrobe Valley problems with sourcing hard rock for aggregate, whilst Melbourne is experiencing sand shortages.

Better management of performance based standards process

It is currently taking considerable time to obtain the relevant permits to use vehicles that come under the national *Performance-Based Standards* (PBS) process. A number of members have experienced difficulties in obtaining the permits required from the authorities involved in a timely manner.

Local Government standards for purchase of extractive products

Many CMPA members have expressed concern at the very poor standard of documentation and/or in appropriately worded specifications being used by a number of municipalities across Victoria. In some instances the vagueness of wording in the contract documents has resulted in unfair advantage being given to in house project teams. It has also resulted in poor quality products being used in other instances.

Future of product and specification development by VicRoads

Many CMPA members have expressed concern at the downsizing of the extractive products development and specification section of VicRoads. This is an area which VicRoads has been very active in the past and it has served Victoria very well in terms of its infrastructure around the state. ■

STM AUSTRALIA
SELECT TRANSMISSION & MOTORS AUSTRALIA PTY LTD
GEAR REDUCER AND DRIVE SYSTEM SPECIALISTS
DRIVES TO KEEP YOUR PRODUCTION ROLLING
Visit our Website for More Products and Information

Gearboxes **Conveyor Rollers** **Motors & Controllers** **Belts & Pulleys** **Shaft Couplings** **Chains & Sprockets**

SELECT PRODUCTS **SELECT SERVICE** **SELECT SOLUTIONS**
PHONE: 03 9761 7355 **www.stmaustralia.com** **FAX: 03 9761 7222**



2011 AGM & DINNER



The CMPA Annual Dinner ventured north to the picturesque towns of Echuca Moama, where guests networked with industry peers at numerous activities. Gavin Moreira, CMPA Administration Officer reviews a fantastic weekend.

ALL the advertising was around having an enjoyable weekend away of fun filled activities. The CMPA Annual Dinner weekend turned out to be exactly that, with fantastic early spring sunshine putting the icing on the cake.

The weekend commenced with a battle royal on the fields of Semoz Paintball, just outside of Moama. It was here that a group of 15 quarry members and associates dressed in camouflage

overalls and supplied with safety helmets and a range of protective gear as well as the important air-powered paintball markers took to playing the extreme sport of paintball.

The challenge was to survive a few hours on the field with very little cover and without getting hit by small gelatine capsules called paintballs. Immense enjoyment was had by some, others endured moments of pain as they were pelted by bullets to various parts of their bodies. A great event and even better talking point for the night ahead.

The culmination of twelve months of planning and hard work by the Secretariat evolved into a wonderful night, where 200 Members and their guests gathered on Saturday August 27 at the Moama Bowling Club in Moama for the eleventh Annual Dinner.

The evening commenced with pre-dinner drinks in The Pavilion; this allowed guests to meet and greet friends and peers over a beer or wine and to take in what was a fabulously refurbished venue.

Soon it was time to move into the function room The Venue where guests were welcomed by MC Brendan James and greeted by a very spacious room filled with bud light centre pieces to light the way to your table. Brendan then officially opened the CMPA Silent Auction for the night, which involved guests bidding on

Solutions for Earthmovers

Safety Sticker Kits
To suit latest Australian regulations

"Photo" Lockout Kits
New with simple iPhone recording system

On-Site Computer Signage Fleet
Signs completed in 1 call-out

Fleet I.D. and Fleet Visibility Systems
Ultra Hi-Viz fleet stripes & Cab Caps

Call 1800 707 448
www.supersigns.com.au

LANDMARK

Next time you are looking for someone to carry out tailings removal, site stripping or overburden removal, ask Landmark Contracting for a quote!

We can cover all aspects of bulk excavation, construction of Landfill cells and civil works utilizing our range of late model earthmoving equipment and operators.

For more information contact: Sharron O'Donoghue
Ph: 03 9589 6424 Fax: 03 9589 7807 Mobile: 0418 391 977
Email: sharron@landmarkcontracting.com.au

Saturday 27th August at Moama Bowling Club

items throughout the night on gifts donated by members. The auction raised nearly \$4000 with proceeds going towards the CMPA Educational Fund to develop educational and training resources to improve safety in your workplaces.

This year the CMPA Annual General Meeting was incorporated into the dinner for the first time. Tim Bird, CMPA Chairperson opened the meeting and in his address spoke about the highlights of the past twelve months including the submission provided to the VCEC – *Inquiry into Victoria's Regulatory Framework* as well as various workshops held on blast management and slope stability. These such issues were brought to the attention of the CMPA through incidents that have occurred on quarry sites. He also acknowledged the hard work of the Associate and Management Committees over the past year.

A motion was raised to accept all presentations provided in the Annual Report: Chairperson, Associate Chairperson, Education Chairperson, Policy & Special Issues Chairperson, Treasurer and Secretary which were duly passed (These presentations provided in the Annual Report are available in the members only area of the CMPA website.).

The last two orders of business for the AGM was the re-election for a further three years to the Management Committee, consisting of Peter Baenziger, Tim Bird, David Carrucan, Garry Cranny, David Eldridge, Robin Hocking, and Basil Natoli. As well, the election of John Mawson as the new CMPA Chairperson, also for a three year term took place. We thank Tim for all his hard work and support over the last three years and welcome John to the role and look forward to working with him over the coming years.

A DVD presentation of the last twelve months of the CMPA was then played which depicted the pride of the members in the association through photos of their quarries, sand and stone front covers, video footage of a blast from Allstone Quarries and voice over commentary outlining the strengths of the association and the challenges that lie ahead. (The DVD presentation can be viewed on the CMPA website www.cmpavic.asn.au).

The feature act of the evening was the MC turned solo artist Brendan James who kept us all entertained with his renditions of Elvis Presley, Dean Martin, Johnny Cash and Frank Sinatra. Guests were also given the opportunity throughout the evening to have their pictures drawn by star caricaturist Tony Bramwell who worked non-stop all night.



KOMATSU QUARRIERS

WAS00-6

6

Excellent visibility
Superior comfort
Large capacity bucket

High productivity
Bucket capacity 4.3-6.3 cu m

Easy maintenance
Ground-level servicing

Oil-cooled post-bleed valves

NATIONAL COMPANY Supporting your business vision

KOMITRAC Superior fleet management

MAINTANIT 24/7 monitoring

SAFETY Komatsu/Perkins/Isuzu/Hitachi/Isuzu/Sanyo/Willbros

Remote-engineer designed proprietary fleet

Get the winning team working for you.

www.komatsu.com.au
CALL 1300 KOMATSU
1300 444 740

KOMATSU
Drive by your vision

Landair
Surveys

Suite 1, 675 Boronia Road,
Wantirna 3152
T: (03) 9887 2888
F: (03) 9887 3897
E: surveyors@landair.com.au
W: www.landair.com.au

LAND, ENGINEERING & AERIAL SURVEYING

SURVEYING FOR THE QUARRY INDUSTRY

SINCE 1974.

We can: SURVEY YOUR BOUNDARIES
CALCULATE YOUR VOLUMES
MAP YOUR QUARRY
PREPARE YOUR SITE PLANS
SET-OUT YOUR PLANT & INFRASTRUCTURE.



2011 AGM & DINNER



The dinner was an overwhelming success with many new contacts made and old ones renewed.

Many associates were overwhelmed by the opportunities they had during the night to network with fellow associates, but more importantly with quarry members. One associate made the comment "I spoke to a dozen quarry members in a few hours, this sort of one on one communication would have normally taken me a few months to achieve and on top of that I didn't even have to travel anywhere to speak to them." "What a spectacular way to mix business and pleasure!"



OTHER COMMENTS

"Had a great time, what a wonderful venue!"

"Thank you for a terrific weekend. I had a great night and have made contact with enough quarry sites to make visits for the next few weeks, which is great."

"What a great weekend, so well organised. It was just perfect -everything just seemed to fall into place effortlessly...but I know how much effort goes in to making it happen. The planning and organising is much appreciated."

"Congratulations to everyone involved in organising the AGM and Dinner, the venue for the weekend and they meals were fantastic."

"Attending my first dinner as a guest of a quarry member, I was overwhelmed by the venue and the entertainment. A great night and a good way to get a better understanding of the association and an insight into the industry they work in."

The night finished with guests who wanted to carry on the party, doing so over quiet drinks and social conversation in The Pavilion and Piano Bars.

At this point the weekend was only half over, Sunday morning brought three more opportunities to mingle with fellow members and to reminisce on the night before.

A beautiful continental breakfast was served up for 50 guests who braved the early morning at the Star Hotel in Echuca, what a start to another beautiful day.

This was soon followed by an hour long Paddle Steamer cruise up the Murray River with over 40 members and families booked in. A leisurely round of golf for eight at the Echuca Back Nine course was held, where rivalries may have commenced for future CMPA events. The inaugural winner was Ian McLeod from DPI.

We sincerely hope everyone enjoyed the weekend and as you can see from the photos it certainly appears that way!

THANKS TO THE SPONSORS

On behalf of the guests at the 2011 Annual Dinner, we would like to thank all those who sponsored the evening:

Early Bird Prize Sponsor: Petromech Pty Ltd

Early Bird Prize Sponsor: Lincom Group

Name Tag & Lanyard Sponsor: Oli Vibrators Pty Ltd

LIEBHERR

Liebherr Australia Pty Ltd
 14 Luiza Avenue
 Dandenong South, Victoria 3175
 David Gallina
 Phone: +61 3 9788 3465
 Mobile: +61 0 400 285 071

Saturday 27th August at Moama Bowling Club

Platinum sponsors:

Astec Australia Pty Ltd and Onetrak Pty Ltd

Gold sponsors:

Atlas Copco Construction and Mining Australia, Belmont Diesel, Bendigo Regional Institute of TAFE, Crushing Equipment, Delta Rent, Finlay Screening & Crushing Systems, Gordyn & Palmer Pty Ltd, Orica Australia (Quarry Services), Terex Jaques, WAM Australia and William Adams.

Silver sponsors:

Advanced Engineering Group, Brightwater Manufacturing Pty Ltd, CJD Equipment, Earthmoving Industry Engineering Pty Ltd, Groeneveld Australia, Indeco Australia, Kinder & Co, Landair Surveys, Landmark Contracting, Oli Vibrators Pty Ltd and Petromech Pty Ltd.

Bronze Sponsors:

Australian Mine & Quarry Supplies, Box Hill Institute of TAFE, CEC Electrical, Central Queensland Hydraulics, Galesafe Weighing, Komatsu Australia Pty Ltd and, Sandvik Mining & Construction and TSP Group of Companies.

It would be greatly appreciated if all Members could thank these companies if you are talking to them. Members are asked to consider these companies when you are next pricing a job. ■



NEWS FLASH!

The 2012 Annual Dinner will be held in Melbourne at the RACV Club on Saturday, August 25. More information will be available in the next issue of Sand & Stone, but put it in your diaries now as an eventful weekend away.

Onetrak PH: 1300 727 520 www.onetrak.com.au

BUILT TO WORK - HARDER

- ROBUST DESIGN & PERFORMANCE**
- POWERFUL GUMMINGS ENGINE**
- EFFICIENT & EASY TO SERVICE**

- RIGID DESIGN = GREATER DURABILITY**
- BUILT TO HANDLE AUSTRALIA'S TOUGHEST CONDITIONS**
- WORKS HARDER = GREATER LIFETIME VALUE**

Onetrak
VIC | 228 Frankston Dandenong Rd Dandenong
TAS | 11 Midland Highway Brighton Tasmania

HYUNDAI **ASTRA INCO** **ASD**

CMPA Annual Report

GAVIN MOREIRA, CMPA's Administration Officer, provides a summary of the CMPA Annual Report. The following demonstrates that although it's been another year of challenges and changes at the CMPA, that overall it has been a great year of achievement for our industry.

CHAIRPERSON'S REPORT – TIM BIRD

Over the last year the CMPA has continued its aim of lifting the standards in the manner in which our Members' conduct their business activities; be it training, networking, occupational health and safety, industry-regulator relationships or the way we have conveyed our input into legislative changes.

The CMPA has continued our advocacy work with the state government and opposition over the last twelve months, as we have always had an even approach to the way we consult, it has held us in good stead for the change of government and we have been able to directly lobby our concerns, frustrations and ideas to the new ministers and their most senior advisors.

Industry networking is also an important aspect of the work of the CMPA and several workshops and training days were organised during the year by the CMPA to address key safety issues. Industry operators, equipment suppliers and regulators met together at workshops on blast management and slope stability to help resolve these issues. Shotfirers refresher training was also held to assist our members in renewing their blasting tickets.

The CMPA Secretariat continues to represent Members views to Government on a whole range of issues, here is just some of the issues that have been worked on in the last twelve months.

- GAA – *Urban Growth Boundary Review*
- VCEC – *Inquiry into Victoria's Regulatory Framework*
- WorkSafe Victoria – *Guidance Notes, Preventing Falls from Quarry Faces*
- VicRoads – *Revision of Standard Section 831*
- DPI – *MRSDA Review Phase 2, Financial Assurance and Rehabilitation Bonds*

These are just a few of the many submissions that have been made in the past twelve months and it is a credit to our small but extremely efficient secretariat and their advisors that make this happen.

EDUCATION COMMITTEE REPORT – GARRY CRANNY

The emphasis of CMPA education in 2011 has been a continuation of our focus on the development and facilitation of industry based training. While this training is aimed primarily at the safety and development of employees, in so doing, it simultaneously reduces risk and improves the productivity and sustainability of member's businesses. To that end, the CMPA provides:

- Seed capital for the development of identified resources if those resources don't already exist.
- Representation at national and state levels.
- Guidance to members and others in the industry.
- A conduit for information flow between participants, employers, RTOs and Governments alike.

Resource Development

The CMPA continues to develop reference manuals and checklists in most of the day-to-day areas of quarrying operations. The Management Committee encourages all members to purchase from the available range of CMPA educational resources. They have been developed by members, for members and they should be readily accessible to all your employees – in this regard do not underestimate the value of accessibility to these reference manuals when your site is visited, as it inevitably will be, by WorkSafe.

Continued Training of the Industry

The undertaking of further education and training requires significant commitment, it can be as challenging and time consuming as it is rewarding.

It therefore requires a high level of mutual cooperation and support from all involved if the desired outcomes - a safer, more productive and better skilled industry workforce - are to be achieved.

The CMPA will continue to work with all industry stakeholders to realise that effort and the achievement of beneficial outcomes for the extractive industry.

The Future

The CMPA must continue to answer the challenge of convincing governments, the bureaucracy and other decision makers that we are a credible organisation representing a vital industry that contributes to the



Established 1853

C.J. Ham & Murray Pty Ltd

CONSULTING VALUERS - SPECIALISING IN QUARRIES AND LANDFILL

- EXTRACTIVE INDUSTRIES
- COMPULSORY ACQUISITION AND COMPENSATION
- LANDFILL WASTE MANAGEMENT
- INDUSTRIAL AND RESIDENTIAL LAND SALES

Contact: Michael Hocking Phone: (03) 9670 7108 Mobile: 0400 248 099
Level 2, 140 Queen Street, Melbourne, 3000 Email: admin@handm.com.au



The CMPA's Management Committee (L to R) Gary Cranny, Ron Kerr, Mark Thompson, Tim Bird, John Mawson, Bruce McClure, Robin Hocking, Basil Natoli and David Eldridge. Absent Steven Richardson, Peter Baenziger and David Carrucan.

economic prosperity of the State and delivers a broad range of social benefits to the general community. It is our shared responsibility to identify and develop our next generation of extractive industry leaders for professional development. We need to make significant and ongoing investment in those people from within our membership who demonstrate the personal qualities, the

professional capacity and the required motivation to assume the leadership mantle of the CMPA.

ASSOCIATE CHAIRPERSON'S REPORT – MARK THOMPSON

In 2011 our Associate members have been actively "getting to know your customer" with good results. By adopting the back to basics approach we have been able to steadily grow

our businesses within the CMPA community and ensure the members have the very best in products, customer service and advice.

We would encourage all members to acknowledge the contribution by Associates and their representatives; you will be surprised how far a simple thank you from a member can grow a relationship.

-Continued from page 25

WE'VE GOT YOU COVERED

We've got you covered more than ever with our new line of loading productivity solutions. You can now accurately weigh materials on a wider range of machinery, and gather the important business information you need to get the most out of your operation.

- Uninterrupted productivity
- Improved profits
- Unparalleled support



Local distribution by Galesafe Weighing
 Phone: 03 9465 0900 Fax: 03 9465 0800
 Email: mail@galesafe.com.au www.galesafe.com.au

LOADRITE

PIONEERS OF WEIGHING SYSTEMS SINCE 1979 • Wheel Loaders • Excavators • Pit Loaders • Conveyor Belts • Productivity Software



Fast Trax FT2650



Fast Trax FT200



Fast Trax Crushing & Screening Train

Multiply Your Capability

FAST TRAX® MULTI STAGE SYSTEMS

The fast TRAX® system is your one source for the ultimate in productivity, mobility, versatility and adaptability.

Every plant is designed to function in various multi-stage processing systems.

Additionally, each plant is designed to function seamlessly with KPI-JCI stacking conveyors, multiplying your capabilities in both mobile and stationary aggregate recycling applications.

The **ASTEC** Family of Companies, Designs, Engineers, Manufactures and Markets Equipment used to Build and Restore the Worlds Infrastructure.

For your total industrial design solution contact **ASTEC** today on

07 3279 1422

Tony Barton 0419 652 942
NSW & VIC Bill Walsh 0458 965 002
enquiries@astecaustralia.com.au
www.astecaustralia.com.au

**TREASURER’S REPORT –
ROBIN HOCKING**

The 2010/11 financial year has been a busy and productive year for the CMPA, achieving a handy financial profit. The profit is more than originally budgeted for, due primarily to a reduction in employment costs associated with the change over in Secretariat personnel and additional membership and advertising revenue.

The major sources of income were membership subscriptions, meetings and events, newsletter and publication sales. All of these aspects were higher than 2009/10 therefore overall Income was higher than the previous year.

Employment expenses were the single largest expense in 2010/11. This covered two full time employees and two part time employees. Other expenses included publications, consultants and the cost of holding meetings and events. The expenditure was less than last year.

**SECRETARIAT’S REPORT –
SARAH ANDREW**

Position Holders

The main change this financial year has been the engagement of Bruce McClure in the role of General Manager. He fills a position that arose with Roger’s departure and remained vacant for a short period. Bruce comes to the CMPA with a family history in the industry (via McClure Earthmoving) and a long personal history of working within VicRoads. More recently, Bruce has worked at a number of local councils.

This year has also seen the engagement of Sean Kinder in the role of Documentation Officer. He also brings with him a family history in the industry (via his parent’s company Kinder & Co) and he is presently studying engineering at university.

Sarah has continued assisting on a casual basis, particularly in the preparation of submissions and providing Bruce with the CMPA’s history.

Through the course of this year, the Secretariat has travelled a total of 10,076 kms to meetings with our Members and stakeholders. Key parties met with on multiple occasions include the Department of Primary Industries – Mineral & Petroleum Branch, various Voting and Associate Members in the course of Gavin’s, Sean’s and Adrian’s work, and various state Ministers.

Title	To Whom	Submitted
Streamlining Local Government in Victoria - Draft Report	Victorian Competition & Efficiency Commission	30/06/2010
Remnant Native Vegetation Investigations	Victoria Environmental Assessment Council	03/09/2010
EPA Victoria Compliance & Enforcement Review Discussion Paper	EPA	22/10/2010
Urban Growth Boundary Review - Amendment CV68	Growth Areas Authority	03/11/2010
Inquiry Into Victoria’s Regulatory Framework	Victorian Competition & Efficiency Commission	08/11/2010
Draft Guidance Notes (Blast Management)	WorkSafe Victoria	24/11/2010
Revision of Standard Section 831	VicRoads	10/01/2011
Revised Guidance Note - Preventing Falls from Quarry Faces	WorkSafe Victoria	21/02/2011
Extractives Sector Rehabilitation Bonds MRSDA Review Phase 2	Department of Primary Industries	28/03/2011
Inquiry into Victoria’s Regulatory Framework - Part 1	Victorian Completion & Efficiency Commission	08/04/2011
Dangerous Goods (Explosives) Regulations 2011	WorkSafe Victoria	14/04/2011
Harcourt Granite Quarry	Department of Primary Industries	26/05/2011
MRSDA Review phase 2 Discussion Papers	Department of Primary Industries	08/06/2011
Draft Code of Practice WHSMS in Mining	WorkSafe Victoria	27/06/2011

Information Flow

Throughout 2010/11 the Secretariat has attempted as always to keep Members well informed. This has seen us maintain our usual communication channels (*Sand & Stone* magazine, and periodic safety and workplace updates), it has also seen greater emphasis placed on the web version of the magazine and, in the member’s only area of the website, the submissions we have made on Member’s behalf.

Once again, I would like to highlight the essential support received by the CMPA from our valued Associate Members who regularly advertise in *Sand & Stone* and otherwise support the CMPA. We cannot stress how much this assists the association and I would again ask Voting Members in return to use the skills of our Associate Members when possible.

Membership

As the new financial year commences, we are proud to report that the Association’s membership has continued to grow over the past 12 months, with an even growth across the membership categories.

Submissions

The CMPA regularly makes submissions to Government and other regulatory bodies when it believes an issue will have an effect on Members’ businesses.

Above is a list of submissions produced over the last twelve months. Copies of all these submissions are available on the CMPA website. ■

Regulation Update

DARREN WATSON, Senior Field Officer, Work Safe Victoria reports on the updated Dangerous Goods (Explosives) Regulations.

THE *Dangerous Goods (Explosives) Regulations 2011* replace the *Dangerous Goods (Explosives) Regulations 2000*. Most of the requirements in the old regulations are the same as the new ones, so if you are complying now, it is likely you will be complying under the new regulations.

There are some changes that have been introduced to improve public safety and security and to clarify responsibilities so that the law is easier to understand.

The changes came into effect on 26 June 2011. However, there is a 12 month transition period that means any activity under the *Dangerous Goods (Explosives) Regulations 2000* will remain lawful for 12 months after the new regulations come into effect.

Storage requirements for blasting explosives under the new regulations are substantively the same as under the old regulations. However the following key changes may impact the quarry industry:

Blast Management Plans – Blast Management Plans are now mandatory rather than just recommended for all people with a licence to use blast explosives. This reflects requirements in line with Australian Standards.

Safety Management Systems – The requirement to develop a Safety Management System (SMS) has been broadened to all manufacturers of explosives, excepting:

- A manufacturer using a mobile manufacturing unit if the worksite on which they are manufacturing has its own SMS.
- A holder of a licence to use blasting explosives that authorises the licensee to use ANFO provided the licensee makes no more than 50 kilograms of ANFO at a time for his or her own use; and
- A firearms licence holder who is only manufacturing cartridge ammunition for his or her own use;

A safety management system is a description of the operator's safety policy and specific risk controls applicable to the manufacturing process. The detail required in the plan will depend on the complexity of the manufacturing operation.

Licensing process – The following three licence classes will now be processed at Australia Post outlets:

- Licence to drive a vehicle transporting explosives;
- Licence to use blasting explosives; and
- Licence to use fireworks.

The CMPA has developed resources to assist members address these changes in the form two checklist books: Shotfirers Blast Management Book and a Magazine Management Safety Checklist. These books are currently being trialled on quarry sites and will be available for purchase once the trial is complete. ■

More detailed information on the changes is available on the Work Safe website worksafe.vic.gov.au or by contacting the Work Safe Advisory Service on 1800 136 089.

INDECO

AUSTRALIA Pty Ltd

ABN 96 056 693 344

1 BURGESS STREET, ALTONA NORTH, VICTORIA 3025



SECONDARY BREAKING



HYDRAULIC ARM ASSEMBLIES

Design = Manufacture = Installation

Each arm assembly individually designed and manufactured to provide maximum safety & efficiency



HYDRAULIC PULVERISERS

DEALER NETWORK THROUGHOUT AUSTRALIA

~ Guaranteed 100% parts availability ~

TOLL FREE 1800 801 987

indec@indec.com.au

You & Your Mates' Safety is Paramount

BRUCE MCCLURE, General Manager of the CMPA discusses the importance of safety at work to ensure that everyone leaves their working day without injury.

SAFETY on any work site is paramount. It is about ensuring that everyone who works on any site whether it be a quarry, a factory, a farm or an office no matter where and or at what time of day, at the end of their working day everyone leaves without injury without stress caused by potentially serious incidents that occurred at that site.

In Victoria, we have in place a system where the extractive industry sites are checked regularly by an inspector from WorkSafe for compliance with all regulations that govern the health and safety of all personal on a work site. For many of these quarries an improvement notice may be issued by the inspector due to some aspect on site not being quite up to the regulations or a prohibition notice stopping the practice or indeed the operations on the site until the practice has been rectified or the equipment involved fixed to meet the requirements.

The table below provided by WorkSafe shows the details on the visits to extractive industry sites by Inspectors from 1 July 2007 to 31 May 2011. The figures in the table show that between this period of time there has been a 155% increase in primary visits to extractive industry sites around Victoria. What these figures do highlight is that on average every extractive industry site could be visited at least once every two

years. While in reality visits to most sites are not that frequent, it would not take the department a lot of resources to actually increase the visit frequency.

The figures in the table also show that for 2010-2011 52% of the primary visits have resulted in improvement notices but only 4% of visits have resulted in prohibition notices being issued. Whilst, improvement notice numbers have decreased from the previous two years, the prohibition notice numbers have increased.

The disturbing statistic is that prohibition notices have increased by 50% over 2010-2011. Even though the overall numbers are low the fact that there has been a 50% increase in prohibition numbers is a warning to many in the extractive industry.

What the figures above do highlight is that all quarry personal need to be constantly vigilant and ensure that they are meeting the requirements set out in the relevant regulations. Attention to safety does not just happen. It is an attitude, an awareness towards ensuring that every site is as safe as we can possibly make it.

We need to ensure that all of us go home at the end of each working day safe and sound. ■

PROJECT 133 QUARRIES/EXTRACTIVE INDUSTRIES

Year	Primary Visits	Site Time	Improvement Notices	Prohibition Notices	Voluntary compliance
2007/2008	115	368	84	4	15
2008/2009	170	584	223	11	44
2009/2010	247	804	313	8	30
2010/2011	293	594	152	12	16
ALL	825	2350	772	35	105

Note: The above information includes self insurers.



eiengineering

better built high performance attachments

Buckets, attachments & G.E.T
for wheel loaders and excavators

Ph. 1300 352 320







Exclusive Dealers For: Powerscreen Mobile Crushing & Screening Equipment, Hercules Heavy Duty Trommels, Telestack Conveyor Systems, Matec Silt Management Systems, and Rapidmix Pugmills

Free Call 1800 182 888 At Your Service, Anytime, Anywhere

Contact Details:

Nth Queensland NT Erwin Koch 0428 889 808
 South East Queensland Stuart Hamilton 0400 888 788
 New South Wales Darryl James 0438 603 177
 Victoria & South Australia.. Gary Payne..... 0438 700 838
 Western Australia..... Mark Malone..... 0438 880 810
 Papua New Guinea Erwin Koch 0428 889 808
 Tasmania..... Dave Stoner..... 0419 882 862

Technical Support

Queensland Bruce Henry 0409 300 818
 New South Wales ... Darren Smith 0417 602 108
 Victoria/SA..... Adam McGregor .. 0407 744 860
 Western Australia... Darren Booth 0400 882 883

After-sales & Special Projects

Albert Toal 0409 708 880
 A member of the Lincom Group of Companies

www.lincom.com.au

sales@lincom.com.au



Australian manufacturer of Harp screens, Piano Wires, Speed Harps & Cross Harps for any deck of any screening machine (Mobile Plants & Fixed Plants).

Mesh screens and accessories for most screening plants and crushers (Mobile Plants & Fixed Plants).

We are a family business focused on personalised service and support.

Please contact Marc or Jon for assistance

t: (02) 4933 3148 f: (02) 4936 6311
e: enquiries@symphonywire.com.au
www.symphonywire.com.au

The Power of Partnership

Access a breadth and depth of Quarry product technology that is available worldwide. Orica's new global product range means consistent names and performance, no matter where you are.

Whether you're in Australia, Austria or Argentina you can now access products such as the Centra™ Bulk System – a high energy, water resistant, pumped emulsion. Manufactured and delivered with precise control, the high on bench productivity of Centra™ allows for faster delivery and turn around of shots. Share the expertise and experience of quarries from every continent with the world's largest explosives manufacturer. That's the real Power of Partnership.

For more information contact Frank Santoro
 Tel: 03 9217 6633 Mobile: 0409 493 420
 Email: frank.santoro@orica.com

www.oricaminingservices.com

Proud supporters of the CMPA



Training Day for Certificate IV Students

NEIL KINDER, Managing Director of Kinder & Co, was delighted to host a training day for the students doing Certificate IV in Surface Extraction Operations.

STAFF training and development in the Extractive Industry is as important as ever. Increased Government regulations and demand for up to date qualifications have seen the need for further training and information regarding the latest trends and equipment available in the marketplace.

“Peoples’ education can quickly fall behind on the more efficient ways of doing things and the importance of safety,” said Managing Director of Kinder & Co., Mr Neil Kinder

Kinder and Co was delighted to be able to host a training day for the Box Hill Institute of TAFE Certificate IV in Surface Extraction Operations students. Demonstrating the correct application of conveyor hardware, assessing the appropriate product for conveyor tracking/spillage and managing safety issues surrounding conveyors.

Certainly the OH&S bar has been lifted in recent years and the significance of keeping people in the loop was evident in the discussions.

CMPA members currently undertaking the Certificate IV in Surface Extraction Operations include employees from EB Mawson & Sons, Local Mix Quarries and Yarra Valley Quarries.

Charles Pratt Operations Manager (Dime), Peter Wei Senior Sales Engineer (B.Eng CHEM) and Marc Selby Sales Engineer (B MechEng) presented sessions on flow and anti wear, conveyor transfer



Kinder & Co host a training day for Certificate IV students in Surface Extraction Operations

points, dust sealing, belt protection conveyor guarding and belt tracking.

Utilizing the mobile display trailer proved a useful demonstration tool allowing each participant a close look at the correct positioning of equipment on a working conveyor, and demonstrating clearly what does what. ■

Kinder and Co has developed an excellent relationship with the CMPA since the company's inception in 1985 and prides itself on its innovative products that provide bulk materials handling solutions to the extractive industry.

All sales engineers regularly appear as guest speakers at industry events and conferences, using their knowledge to educate the attendees.

As industry leaders they can be relied on to bring the latest technology to the marketplace.

Further information contact Neil Kinder on (03) 9587 9244

10% discount for CMPA members

Offering Services of:

- Conveyor Products
- Bucket Elevators
- Flow & Anti-Wear
- Belt Cleaning Systems
- Conveyor Skirting & Transfer
- Safety and Environmental
- Screening

+61 (3) 9587 9244

sales@kinder.com.au

www.kinder.com.au

VLPA Update

PETER MCCLUSKY provides an update on the Victoria Limestone Producers Association.

AGM AND CONFERENCE

It is currently planned to hold the AGM and conference at the Warrnambool Bowling Club on Tuesday 15 November 2011. Members have recently been sent an initial email and indications are that these arrangements are suitable. Further communications will be sent nearer the date when guest speakers are firmed up. However it is expected we will have a run down on the various field days and seminars on combating acidic soils particularly in western Victoria.

SUBMISSIONS TO GOVERNMENT INQUIRIES

VLPA has made submissions to several recent inquiries:

- Importance of geological exploration
- The ministerial review of the Victorian planning system.

The main points emphasised applied to both inquiries, i.e. that exploration is the R&D of the minerals industry, planning proposals near known extractive deposits should be compulsorily referred to DPI minerals regulation before Councils make determinations on planning applications; appropriate buffer zones be maintained between encroaching development and extractive sites; and that the system is currently too long and costly and that statutory endorsement of work plans by DPI (currently proposed) would avoid Councils re-referring applications back to agencies.

CARBON TAX

National Aglime Association had requested interpretation from the appropriate Commonwealth Department of various parts of the supply chain from mine/quarry to on farm spreading etc. and how the carbon tax might apply or not apply. The point of interest being that VLPA & NAA are part of the agriculture supply chain and as such, policy documents are telling us that agriculture would be exempt from the tax.

The Commonwealth Department took a month to send answers and in essence it is intended to amend the *Fuel Tax Act 2006* to include a definition of agriculture as "cultivation of the soil". The tone of the answers to the questions is that transporting and especially spreading the likes of lime would not be "agriculture" under this Act. Not the sort of interpretation our industry would want to hear. So we will continue to oppose the concept of this tax.

ACID FIELD DAYS

A further field day is planned for the Bass Coast area in late November 2011 where VLPA will work with Bass Coast Landcare and DPI to publicise the importance of using lime to combat acidic soils and raise pH in the region.

This follows on from two very successful field days at French Island and Poowong North covering the subjects of soil pH and soil carbon in which VLPA recently worked with Westernport Catchment Landcare Network. ■



For further information contact
Peter McCluskey 0408 496 588

SMITH EQUIPMENT

- > Quality used equipment for resale
- > Short and long term heavy equipment rentals
- > Dismantling of equipment for quality used parts & components
- > Supply of new after market spares to suit Caterpillar equipment
- > Reconditioning parts & components for outright and exchange sale

Our business is keeping your business on the go.

Phone 03 8782 1888
Fax 03 8781 0323
www.smithequipment.com.au
405 Hurrewood Road,
Dandenong Victoria 3178

www.smithequipment.com.au

CJD EQUIPMENT

CJD Equipment Sales / Service / Parts
Supplier of Earthmoving Equipment since 1974

Call your nearest CJD Equipment branch to find out how our new series Wheel Loaders and Dump Trucks will slash your operating costs and significantly reduce downtime.

National Distributor for Volvo & SDLG Construction Equipment

Melbourne 210 Northbourne Road, Campbellfield, VIC. 3061 Tel 03 9305 2566	Dandenong 68-70 Greens Road, Dandenong, VIC. 3175 Tel 03 9767 8000	Albury 6 Reiff Street, Lavington, NSW. 2641 Tel 02 6025 2666
---	--	--

Web: www.cjd.com.au

DPI Update

COLIN THORNTON, General Manager Minerals and Extractive Operations, discusses critical issues with dams at quarry sites.

WATER and water management are critical issues, not only for the Earth Resources industry, but for society in general. Within a year we have seen the emphasis go from the need to manage water usage in a water constrained environment, to ensuring operations are designed and operated to cope with large rainfall events. Over the past twelve months the Operations Branch of the Earth Resources Regulation have undertaken two targeted audits in the water space, most recently focusing on embankment dams.

During the January-June period of 2010 DPI officers completed thirty six targeted audits on mines and quarries across Victoria inspecting their management of water dams on site. Each audit assessed compliance issues and the overall performance in relation to the design and operation of water dams. Tailings Storage Facilities and dams without constructed embankments (i.e. old pits & excavations) were not included.

There were sixty eight dams assessed at the thirty six sites visited. The dams inspected were used for wash plants, various processing uses, dust suppression and site runoff / sediment settling. Dam size varied from less than 500,000 litres to over 60 Megalitres. Embankment height (at the highest point) varied from 1 metre to over 6 metres. Only five dams assessed were licenced with the applicable water authority. A further three dams were identified that required assessment by the relevant catchment authority. The remaining dams assessed did not require licencing.

OPERATION AND MANAGEMENT

Only 15% of quarry operations assessed had dam operating plans, operating procedures or other documented methodology for operating their dams, compared to 80% of mine sites. All other Work Authorities had no dam operating plans or procedures. This deficiency was mitigated by the generally smaller volume of quarry dams and the fact many dams were often only utilised for washing, dust suppression purposes, or capturing run off. Many operators were able to describe anecdotally procedures for dam control and water management.

All but four sites inspected were able to show documented dam inspections or provide details of regular visual observations undertaken. However, only half of the sites were able to show the recordings of abnormal features identified and reported to senior levels of management. Almost a third of sites did not record dam faults identified or actions taken to rectify those faults.

DESIGN AND CONSTRUCTION

All but six dams assessed on quarry sites had been approved under the current site work plans. Twenty percent of dams at quarry sites had been constructed to guidelines on the safe design and operating standards for water dams. Most dams had been constructed by previous operators, often many years before. Of these, no design documentation or construction reports were found to exist.

PUBLIC SAFETY & PUBLIC INFRASTRUCTURE

All but one tenement assessed had adequately protected their dam sites against access by unauthorised personnel. Sites were generally fully fenced. In addition many dams themselves were also further fenced. Gates and appropriate signage were in place.

CONCLUSION

Overall, only 19 of the 36 sites audited were able to provide objective evidence of good dam design, construction, operation and management of their embankment dams. However, 93% were found to comply or substantially comply with the requirements in their own work plans and/or work plan conditions.

Six tenement holders have been required to submit work plan variations to rectify identified deficiencies or to apply for a modification of conditions. A number of notices and directions were also issued and will be followed up to ensure compliance.

All quarry dam owners are legally responsible for the safety of their dams and any problems these dams may cause if they fail. Dams on quarry sites require regular inspection and maintenance to keep them in good order. ■

SALES-SERVICE-HIRE

STRIKER CRUSHING & SCREENING

PETROMECH

INQUIRY CONTACT:
Shawn deo-Buller - 0499 216 175
www.strikercrushing.com

AUSTRALIAN RELIANCE

BETTER PEOPLE BETTER SOLUTIONS BETTER SERVICE

Insurance Industry Awards
2010 WINNER

Voted Australia's
leading insurance
broker in 2010*

* Winner of 2010 Broker of the Year for up to 100 employees by the Australian and New Zealand Institute of Insurance and Finance.

PERTH | SYDNEY | MELBOURNE
08 9382 7888 | 02 8234 0400 | 03 9864 4444

www.australianreliance.com.au

GP LEADING ELECTRICAL SYSTEMS

Quality Electrical Engineering & Automation Design



- Custom made switchboards and operating systems specifically designed to meet the requirements of your plant and the quarry environment.
- Operational feedback that allows you to target underperforming parts of your plant.
- Over 30 years serving this industry ensuring plant reliability and the right electrical components for your plant
- Back-up and support 24 hours, 7 days

- Incoming High Voltage Design
- Plant Distribution
- Area lockout design and coordination
- Customized Graphical Plant operation & monitoring
- Production and fault reporting
- Material usage and inventory
- Liquid control - auto dust suppression
- Blend plant auto control systems
- Weighbridge systems (with contract management & invoicing)
- Local common product selection
- Maximize plant efficiency



GP GORDYN & PALMER PTY LTD

46 Melverton Drive Hallam Victoria AUSTRALIA 3803
 Ph: +613 9703 2477 Fax: +613 9796 3477
 Web: www.gordynpalmer.com.au
 Email: eng@gordynpalmer.com.au
 Contact: Terry Hickey

Do what you like
 at Box Hill Institute.



Box Hill Institute's qualified trainers are experienced in the design, development and implementation of specialised training for industry based delivery in the extractive industry sector.

A focus of the program is the support provided for the individual participants to ensure success.

Programs are offered in both metropolitan and regional areas.

For further information please call Chris Terry on (03) 9286 9698 or Clive Wilson on (03) 9286 9771.

www.boxhillinstitute.edu.au

CAUGHT BETWEEN A ROCK AND A HARD PLACE?

We specialise in ensuring your plans for assessing and extracting your resource obtain approvals from DPI and other statutory authorities.

IT'S WHAT WE DO BEST!

C.K. PROWSE & ASSOCIATES Pty Ltd

Consultants to the Extractive Industries
 with over 25 years experience

Ph: (03) 9429 2433 Email: admin@ckpa.com.au

- SUMITOMO**
Excavators
8 to 80 tonnes
- YANMAR**
Mini Excavators
0.8 to 8 tonnes
- KAWASAKI**
Wheel Loaders
1.2 m³ - 6.0 m³
- MITSUBISHI**
Road Graders
- SUMITOMO -HITACHI**
Crawler Cranes

- BOMAG**
Rollers, Landfill Compactors,
Tamers & Plates
- MUSTANG**
Skid Steer Loaders
- KATO**
Excavators & Cranes

BT EQUIPMENT PTY LTD
 80-86 Frankston-Dandenong Rd Dandenong 3175
 Ph 03 9554 0300 www.btequipment.com.au

Energy Management – Simply Vital Going Forward

TERRY HICKEY, Managing Director of Gordyn & Palmer Pty Ltd provides a report on automated energy management.

WITH the cost of electricity ever increasing even before the carbon tax, Automated Control Systems including energy management are vital for today's business.

Understanding complex supply contracts and their limitations are equally a demanding challenge to plant managers. However, keeping the plant "under control" ensures the plant never exceeds its contract amount and maximises the power efficiency for each stage of the process.

The right infrastructure to monitor, control and report is vital to allow managers to operate with the set knowledge of the real cost of the goods produced.

Investment in any capital must have clear evidence of payback within a reasonable time. Unfortunately many decisions on infrastructure expenditure have not always been able to be measured to show return. Monitoring power usage and automatic controlling of plant equipment is a sure way of seeing return on investment and controlling spiralling power costs.

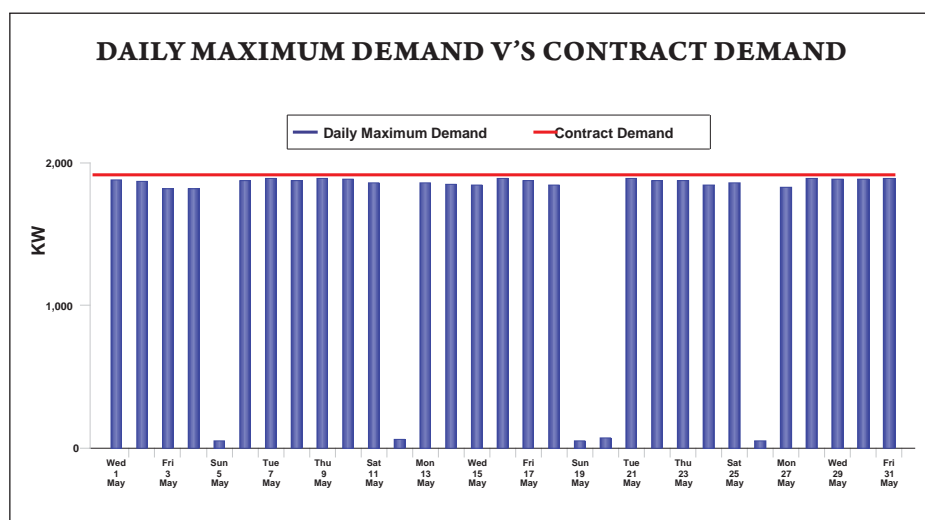
Energy management begins at the supply retailer's meter where, depending on the contract amount, the maximum demand is set. Exceeding the contract maximum demand will certainly mean significant increase in electricity costs for the full term of the remaining contract. Automation can ensure the contract amount is never breached and having the added benefit of reporting the real electrical costs of production.

Automated Energy Management

Crushing is the largest consumer of power in a quarry. Minimizing power consumption and improving power factor by using advanced control techniques can save significant costs.

Raw material quality is determined by its hardness, stickiness and water content. As such, quality variations can vary and the crusher, therefore, needs to be able to adapt its speed accordingly, while providing accurate crushing to ensure correct particle size.

Crusher motors are typically rated at hundreds of kilowatts, starting needs to be smooth to minimize mechanical stresses and eliminate high starting currents. All main motors including crushers and critical Key Performance Indicator (KPI) parts of



plant are fitted with sensors, and the signal connected to the System to monitor, trend and control the power usage of the equipment.

The demand on electricity supply used to power the crusher and other motors will vary depending on the required particle size: the smaller the particle the more electricity is used in crushing it. Variations will also depend on mechanical setup, CSS, raw material density, clay and moisture content, etc.

Some of the methods and techniques used in advanced control:

- Automated staggered start-ups reduces peak demand on electricity supply
- Running crushers at full load maximizes throughput and makes the most efficient use of installed power (using advanced crusher feeder controls to achieve this)
- Using soft starters for minimizing mechanical and electrical stresses and power demand
- Using variable speed drives to optimize crushers speed and crushing efficiency, as well as quality of crushed rock. This technology provides better power factor and again results in energy savings.
- Using power factor correction to reduce electrical power demand and electrical power losses.
- Automatic optimised plant operation providing constant yield.
- Accurate direct loading systems minimising the need for loader movements and ensuring optimised truck utilisation.

- A power management system constantly monitors energy consumption intervals and ensures that the peak demand for that period stays under the contract demand. Once the demand gets close to the contract amount, the system automatically reduces power demand through load shedding of non-critical plant.

Alex Fraser Clayton and Laverton sites have been utilising methods 1 -7 since 2009, whilst Hanson – Wollert have had a power management system for over ten years. It is based on continuous real time energy readings off the meter. The system is based on a Programmable Logic Controller (PLC) interface and incorporated into the plant control system. The system widely used in manufacturing sector can now efficiently be installed in all process plants. Today's systems also provide full reporting and diagnostics including individual and overall performance of key equipment and can be fully supported throughout Australia. ■

Gordyn & Palmer Pty Ltd has provided quality electrical and industrial automation to the quarry and material handling industry since 1978 and continues to lead the way in development of custom systems.

Gordyn & Palmer has been a long term associate member of the CMPA. We're proud to be associated with this association and will continue to work closely with members to develop smarter, more productive and safer ways of doing business.

Further information contact Terry Hickey on (03)9703 2477 or www.gordynpalmer.com.au

Energy Efficient Vibrating Equipment

MARK THOMPSON, General Manager of Oli Vibrators Pty Ltd provides a report on the growth of the materials handling giant.

OLI Vibrators offers standardised industrial solutions for all your vibration needs. Producing a range of energy efficient high quality electric and pneumatic vibrators, we supply equipment tailored to all facets of manufacturing and engineering. Our vibrating equipment and flow aids are used worldwide, thanks to their long term durability, high degree of versatility and skilful manufacture using only the very best material and standards; we are quickly becoming the preferred choice by engineers and manufacturers.

Whether you need systems for flow control, screening, cleaning, conveying or other agitation purposes, OLI has a precisely engineered solution for your application, all our vibrators are rated IP66 and are developed for use in wide variety of environments.

Our electric vibrator range is available in 2 pole, 4 Pole, 6 Pole, 8 Pole and is also available in Single Phase and 3 Phase, we also offer a full range of Standard, Increased Safety and Explosion Proof configurations all of which are designed for continuous use and versatility.


Oli started in Italy in 1961 and became a part of the world wide materials handling giant the WAM Group of companies. In 2004 Oli Australia was born under the WAM Australia banner and enjoyed exceptional growth almost from the day it started. It was soon evident that with this growth and the demand for larger stock holdings that

Oli Australia would soon be destined to become independent of WAM Australia and so in 2009 Oli Australia had relaunched itself as a new entity in the Australian Market.

As part of the global strategy of Oli worldwide we are now established in 14 countries around the world, Oli Australia is able to capitalise on the global distribution channel network thus ensuring speedy delivery and availability of our products. As a group of committed professionals drawn from many areas of industry around the world, we know exactly where problems arise and the best ways to solve them. That's why we're dedicated to sharing our expertise through our products. With our network of agents around Australia we are able to offer excellent service, quick delivery and sound advice.

THE BIG STUFF

As part of our ongoing commitment to bring quality brute force vibrators to the market we have newly released our range of larger frame vibrators, available in both 6 and 8 pole, they are available with centrifugal forces up to 26000 Kg's. These vibrators have undergone extensive testing in the market as well as exhaustive laboratory stress and performance testing to ensure that quality operation and longevity is the key to our success.

<h2>Extractive Industry</h2>	
<p>Lawyers for the CMPA with expertise and experience in extractive industry issues, including:</p> <ul style="list-style-type: none">• Leasing• Planning• Environmental• Employment• Occupational Health & Safety	
<p>Contact Andrew Lumb alumb@nevettford.com.au</p> <p>www.nevettford.com.au</p>	
	<p>Level 42 South Tower Rialto 525 Collins Street Melbourne 3000 Tel: 03 9814 7111 Fax: 03 9814 3192</p>
<p><i>"Building quality relationships with clients"</i></p>	

	<p>Good Vibrations <i>When you need it where you need it</i></p>
	
<h2>Experts in Vibration & Material Flow Technology</h2>	
<ul style="list-style-type: none">• Large range of Pneumatic, Electric Vibrators & Flow Aids available• 2 Pole, 4 Pole, 6 pole, 8 pole models• High reliability, full 2 year warranty• Adjustable frequency, low noise• Suitable for hazardous conditions• Long Service Life• Fully enclosed IP66	
	
<p>Oli Vibrators Pty Ltd Call 03 8761 6911 or email info@olivibrators.com.au Visit www.olivibrators.com.au for more information</p>	

OLI LAUNCHES INTO NEW ZEALAND

Over the past few years Oli has begun to make its presence in the land of the long white cloud, in conjunction with WAM MHE NZ we have enjoyed a relaunch of the Oli range into a number of manufacturing sectors. With the use of advertising and our increased presence in the market we are experiencing huge acceptance of our products.

The uptake has been exceptional with particular interest being shown from the Cement, Concrete and quarrying sectors. Jim Fairly, our man on the ground in New Zealand has said that whilst the economy is quite slow at the minute the uptake has been a blessing and that sales for Oli are up by at least 60%.

Oli Vibrators are used by Hanson, Boral, Wheelan Quarries, Conundrum Holdings, Holcim, Boral Asphalt, Barro Group, Rocktec, Tylden and Warill Engineering to name but a few.

As an established business with a solutions-based methodology, we offer high-quality, highly versatile vibration and agitation products for use in any industry. Our prices are second-to-none, just like our service. As part of our dedication to service, we offer a two year warranty on our electric vibrator systems. You can't lose with that kind of guarantee! OLI and WAM - a partnership dedicated to bringing you excellence. ■

For more information, contact:

Oli Australia - a company dedicated to bringing you excellence.

Contact: Mark Thompson Oli Vibrators Pty Ltd (Aust) 03 8761 6911

or Email: info@olivibrators.com.au - visit www.olivibrators.com.au



Large 8 pole vibrators connected to a Sizemack Screen



60 SECONDS WITH AN ASSOCIATE MEMBER...

What is your name?

Mark Thompson

Who do you work for?

Oli Vibrators

How many years have you worked for this business?

8 years

How many years have you been involved in the Industry?

15 years

What is your role at the company?

Managing Director

What does your job involve?

Day to day sales, running the company

What is the best part of your job?

Experiencing our equipment working for our customers and meeting a diverse range of people on a daily basis from different industries.

Mobile Impactor Crusher & Screening Plant Hire

Striker Impactor Crusher & 683 Finlay Screening Plant

Ashley Day
(03) 5768 2366
0438 682 366



LIMA SOUTH QUARRY

Great Service Leads to Great Growth

DAVID SMALE, General Manager from Astec Australia reports on the growth of the company

MINING- and engineering-supplies company Astec Australia is geared up and ready to grow alongside its customers as Australia's resources boom continues.

The company carved out its position in Brisbane just three years ago and has experienced rapid growth since, with 15 companies now under the Astec Australia umbrella providing crushing, screening and handling equipment; asphalt equipment; paving equipment, pipe-lifting equipment and more.

The expansion and diversification of the company means it has outgrown its original facility. To accommodate the growing demands of Astec Australia's customers, the Queensland head office has been moved from Sumner Park to the Westridge Industrial Estate, Acacia Ridge. This two-hectare facility will house display equipment, a custom fabrication warehouse and servicing warehouse, making it a one-stop shop for mining and engineering equipment.

In addition, Astec Australia has now opened an office in Perth, Western Australia, and has established sales representatives for every state.

General Manager David Smale says the reason for Astec Australia's boom is unparalleled customer service. "Our willingness to support customers with the best after-sales service, to be contactable 24/7 and to solve any problems they may have has contributed to Astec Australia's success."

"We take pride in the fact that we listen to what our customers say and learn from their experiences with our machinery, and then build this back into the next generation of product offerings," he adds.

Looking to the future, Astec Australia will continue to build on its core business of asphaltting, while expanding the Astec family of businesses.

David says, "Astec Australia offers the aggregate, crushing and screening and mining sector another choice – and a strong one at that. We provide a quality product backed up by unparalleled after-sales service."

Astec Australia is a proud supporter of CMPA members and its events including being Platinum sponsors at the CMPA Annual Dinner for the last two years. ■

For further information contact Adam Gordon, Aggregate Account Manager for Vic, SA and TAS on 0408 353 867.



Astec Australia's new head office at Acacia Ridge, Queensland



Crushing & Mining Equipment

- Suppliers of Quality Crusher Manganese and Spare Parts to suit all Crushers
- New and Used Machinery
- Auspactor Verticle Shaft Impactor - Designed and built by CME

Australia Wide Sales Freecall Ph: 1800 786 607

Brisbane 07 3382 0611 ■ Sydney 02 9838 1411 ■ Perth 08 9437 1477

www.crushingandmining.com.au brisbane@crushingandmining.com.au



TRAINING & EVENTS

COLLECT AND PREPARE SAMPLES

The *Collect and Prepare Samples* course being developed by the Bendigo Regional Institute of TAFE is progressing.

Comments have now been obtained from a number of CMPA Members and VicRoads on the contents of the course. A small number of improvements to the package have been suggested and these are being incorporated in the document.

Also some further information from VicRoads to improve the extractive industry aspect of the document is being sourced at present and the final document for this course will be available by the end of September 2011.

The *Collect and Prepare Samples* course is now proposed to commence around 10 October 2011.

All CMPA members will be notified of details on when the first course will commence in October.

To book, please contact Stacey Clark at Bendigo Regional Institute of TAFE by phoning (03) 5434 1653.

SHOT FIRER'S REFRESHER TRAINING AND ASSESSMENT

Have you received a request from WorkSafe to renew your Shot Firers licence?

If so, you need to attend the next one day CMPA organised refresher training course for currently licensed Shot Firers, presented by Box Hill Institute of TAFE. The training will be conducted in the morning and followed in the afternoon by the Victorian WorkCover Authority examination for the Use of Blasting Explosives.

Date: Tuesday 22nd November 2011

Location: Box Hill Institute of TAFE, Whitehorse Road, Box Hill

Time: 8.00am – 4.00pm (Includes Lunch)

Cost: CMPA Members \$450 (Includes \$150 WorkSafe Fee)
Non-members \$550 (Includes \$150 WorkSafe Fee)

To book, please contact the CMPA by phoning (03) 5781 0655 or emailing enquiries@cmpavic.asn.au

Raise your level of efficiency and profitability.

The ThorStack2 maintains your competitive edge, supplying clean in-spec material every time.

- Capacities of 2000 t/h
- Stockpiles to 240,000t
- Eliminates contamination
- Telescopic to 58metres
- PLC controlled to generate stockpile
- Piles are even-blended, non segregation and non-compacted

ThorStack2

Telescopic, Portable, Radial Stacker



Select
Engineering Services

Serving the Australian Quarry & Mining Industries for over 25 years.

Select Engineering Services Pty Ltd. 7 Gatwick Road, Bayswater North, Victoria 3153 Australia
Phone 03 9720 6333 • Email sales@selectengineering.com.au • www.selectengineering.com.au



When you need the best, there is only one safe choice

As the world's largest integrated supplier of specialised quarrying equipment, we offer the widest and most comprehensive range of products for the quarry industry – backed by the best service and support network in the business.

Our range of crushing, feeding and screening equipment – both fixed and mobile – along with the world's most advanced drill rigs and materials handling capabilities, allow us to offer an integrated solution to your quarrying operation.

With Sandvik solutions, you can be sure.



SANDVIK MINING AND CONSTRUCTION AUSTRALIA BRISBANE (07) 357 7700 SYDNEY (02) 953 9500 PERTH (08) 937 5000 info.usa@sandvik.com www.sandvik.com

CEMENT THAT'S KIND TO THE ENVIRONMENT

The Ecoblend range of cements are specially formulated to reduce the environmental impact of cementitious binders used in concrete and stabilisation products.

Please call 9676 0000 for a free carbon abatement comparison or go to www.independentcement.com.au

 **Ecoblend**



QUALITY ASSURED
ALTERNATIVE WEAR
PARTS



**CRUSHING
EQUIPMENT
PTY LTD**

Manganese & Alloy Steel
Wear Parts

Bowls Mantles Crusherjaws

Blow Bars, Hammers

Mill Liners

Mining & Quarrying Spares

Auxiliary Crusher Parts



SCAW METALS
GROUP

All castings are covered by our
Quality Assurance Standard AS/NZS ISO 9002:2000

MELBOURNE 7 Beveridge Drive Tullamarine, Vic 3083	PERTH 88 Barbicry Way Bibra Lake, WA 6163	BRISBANE Unit 10, 54 Notar Drive Ormeau, QLD 4208
Office: (03) 9338 0200	Office: (08) 9434 9652	Office: (07) 5548 7760
Fax: (03) 9338 0000	Fax: (08) 9434 5515	Fax: (07) 5540 7377

Web : ozzfounries.co.za
Proudly supporting the CMPA & it's Members

Chadwick T&T



Key capabilities:

- Groundwater and hydrogeological studies
- Specialists in quarry material testing and sampling
- Geotechnical services
- Drilling services
- Laboratory and field testing of soils, rock and concrete
- Environmental sampling and testing
- Earthworks supervision
- Thermal resistivity testing
- Field instrumentation.

www.chadwicktt.com.au

GEOTECHNICAL AND ENVIRONMENTAL INVESTIGATIONS

ASSOCIATES DIRECTORY



Sales and local service of Atlas Copco Surface Drill Rigs and consumables for the quarry industry.

Melbourne Service Centre
66 Old Geelong Rd, Brooklyn
Sales – Randall Brothers Ph 0419 980 029
Secoroc – Jamie Cairns Ph 0417 377 870

Ph: 03 9316 1600

AUXILIARY EQUIPMENT

Galesafe Weighing, 03 9465 0900
Groeneveld Australia, 1800 640 560
Tecweigh, 03 9775 0266

CRUSHING & SCREENING EQUIPMENT

Advanced Engineering Group, 03 9363 1577
Astec Australia Pty Ltd, 07 3714 8800
Australian Mine & Quarry Supplies, 0439 399 744
Brightwater Manufacturing, 03 9311 8558
Crushing & Mining Equipment, 07 3382 0611
Finlay Screening & Crushing Systems,
07 3888 1777
JOEST Australia, 08 9358 3740
Lincom Group, 03 5335 5088
MSC Group, 03 9671 3555
Precision Screens Pty Ltd, 07 3271 4155
Roylance's, 03 9645 6622
Sandvik Mining & Construction, 03 9703 2200
Striker Crushing & Screening, 07 3881 1227
Symphony Wire, 02 4933 3148
Terex Jaques, 03 8551 9300

DRILLING & BLASTING

Atlas Copco Construction & Mining Australia,
03 9316 1600
Craig's Drilling, 0409 416 705
Edge Drilling, 0408 104 414
Impact Drilling, 03 9310 2011
Orica Australia (Quarry Services), 03 9217 6633
Statewide Drilling (Vic) Pty Ltd, 03 9879 2999

EDUCATIONAL TRAINING

Bendigo Regional Institute of TAFE, 03 5434 1653
Box Hill Institute of TAFE, 03 9286 9711
NMIT, 03 9269 1042
Quantec Solutions, 03 9619 7833

EQUIPMENT & PLANT HIRE

Ground Hog Sales & Rentals Pty Ltd, 1300 660 001
Landmark Contracting, 03 9589 6424

ENGINES & TRANSMISSIONS

Transdiesel Australia, 1300 553 763

ELECTRICAL & HYDRAULICS

CEC Electrical, 0417 379 062
Central Queensland Hydraulics, 07 4952 5621
Gordyn & Palmer, 03 9703 2477

INDUSTRY CONSULTANTS

Bell, Cochrane & Associates, 03 9710 1800
Bureau Veritas HSE, 03 9922 0700
Chadwick T & T, 03 8796 7900
CJ Ham & Murray, 03 9670 7108
CK Prowse & Associates, 03 9429 2433
Earth Tech Services, 0413 609 624
Extractive Consulting, 03 5786 2174
Focus CDS Consultants, 03 8794 9911
Main & Associates, 03 8361 8727
Norris & Schoeffel, 03 5157 9264
Quarry Crete, 03 5367 1953
Rural Works, 03 5798 1406
Stephens Valuation & Consultancy, 02 4704 8483
Super Signs Australia, 1800 707 446

ROYLANCE'S
AUTOMOTIVE, INDUSTRIAL, CONSTRUCTION & MINING
1300 659 693
PERTH MELBOURNE CHENG
www.roylances.com.au
"AUSTRALIAN OWNED FAMILY BUSINESS"

If you want **Improved Penetration**, and **Improved Wear** from your Points and Edges, then give the Team at **ROYLANCE'S** a call. We are the only Authorised Dealer in NSW and Victoria, for **ESCO** product, **And** the Industries Most Trusted Wear Plate "**WEARALLOY**" We will manufacture to **YOUR** requirements. Don't be let down by Non Genuine Product. For all your Quarrying and Mining requirements whether it is Safety Gear, Automotive or Ground Engagement Tools make **ROYLANCE'S** – Your First and Last Call.

INDUSTRY SERVICES

Australian Reliance Pty Ltd, 03 9864 4444
Brightwater Engineering Solutions Pty Ltd,
03 9646 3008
Ezy Inductions, 03 9029 3173
GE Commercial Finance, 03 9867 0086
Heavy Equipment Finance Australia, 1300 308 583
Industri Communications, 0418 132 911
Landair Surveys, 03 9887 2888
Mead Partners - Chartered Accountants,
03 9523 2277
National Australia Bank Limited, 03 9839 7208
Nevett Ford Lawyers, 03 9614 7111
OAMPS Insurance Brokers, 03 9412 1361

MATERIALS HANDLING

Claypro (Aust) Pty Ltd, 03 5449 3970
Computerised Bearing Analysis (Aust) Pty Ltd,
03 5441 2348
EI Engineering Pty Ltd, 03 9763 3588

MATERIALS HANDLING

ECH Pty Ltd, 03 8769 6666
Independent Cement & Lime Pty Ltd,
03 9676 0000
Kinder & Co Pty Ltd, 03 9587 9244
Leech Earthmoving Contracting Pty Ltd,
03 5472 2944
Oli Vibrators Pty Ltd, 03 8761 6911
Select Equip, 03 9720 6333
Select Transmission & Motors Australia,
03 9761 7355
Statewide Bearings, 03 8710 9777
TSS Company, 03 9702 4502
WAM Australia, 03 9737 4700

MOBILE PLANT

Belmont Diesel, 03 5248 7253
CJD Equipment, 03 9305 2566
Delta Rent, 1300 793 071
GP Smith Equipment (Vic) Pty Ltd,
03 9793 1588
Hitachi Construction Machinery, 03 9791 6666
Komatsu Australia, 03 9205 9300
Liebherr Australia, 03 9768 3465
Onetrak Pty Ltd, 1300 727 520
Tutt Bryant Equipment, 03 9554 0300
Vermeer Australia, 07 3275 4888
Victorian Construction Equipment Pty Ltd,
03 8339 4705
William Adams, 03 9566 0666

ON ROAD VEHICLES

CMV Truck & Bus, 03 9931 6777

PLANT FABRICATION

Fusion Hire Services, 03 8770 5770

PRODUCTION CONSUMABLES

Crushing Equipment, 03 9338 0200
Quality Performance Lubes, 03 5367 8794
TSP Group of Companies, 03 9545 0878

SECONDARY BREAKING

Indeco Australia, 03 9315 3266
Petromech, 03 9768 3180



IMPACT DRILLING

Providing full drill and blast services to the Quarry, Construction and Mining sectors.

www.drill.com.au

Impact Drilling

Ph: 03 9310 2011

HIRE

SHORT & LONG TERM

- SHORT AND LONG TERM HIRE
- LATE MODEL EQUIPMENT
- AVAILABILITY AT SHORT NOTICE
- BEST SERVICE

JOY DRILLERS
 CONE DRILLERS
 IMPACT DRILLERS

3 & 4 WAY SPLIT SCREENS
 RECLAIMER SCREENS
 BYDOPLOMS



SALES

NEW & USED McCLOSKEY

McCloskey
 INTERNATIONAL

WWW.MCCLOSKEYINTERNATIONAL.COM

- SCREENING
- CRUSHING
- RECYCLING

The World's Premier
 MOBILE CRUSH-ERS,
 SCREENS, TRACKERS,
 CONVEYORS, WASHERS
 AND RECYCLING
 EQUIPMENT



**BRISBANE
 NEWCASTLE
 MELBOURNE**

Central Enquiries - 1800 803 857

NSW / ACT	Matthew O'Brien	0418 714 743
VIC / TAS / SA	Ian McCartney	0428 801 080
SE QLD / ALBany	Barry McCann	0419 788 830
Central / N. QLD / PNG	Kiwan Barr	0419 801 060
Spares Paris	spares@msc.net.au	1800 803 084

WWW.MSC.NET.AU

**SPARES TO SUIT ALL BRANDS
 OF MOBILE SCREENING AND
 CRUSHING EQUIPMENT**



**SPARES DIRECT
 1800 556 024**